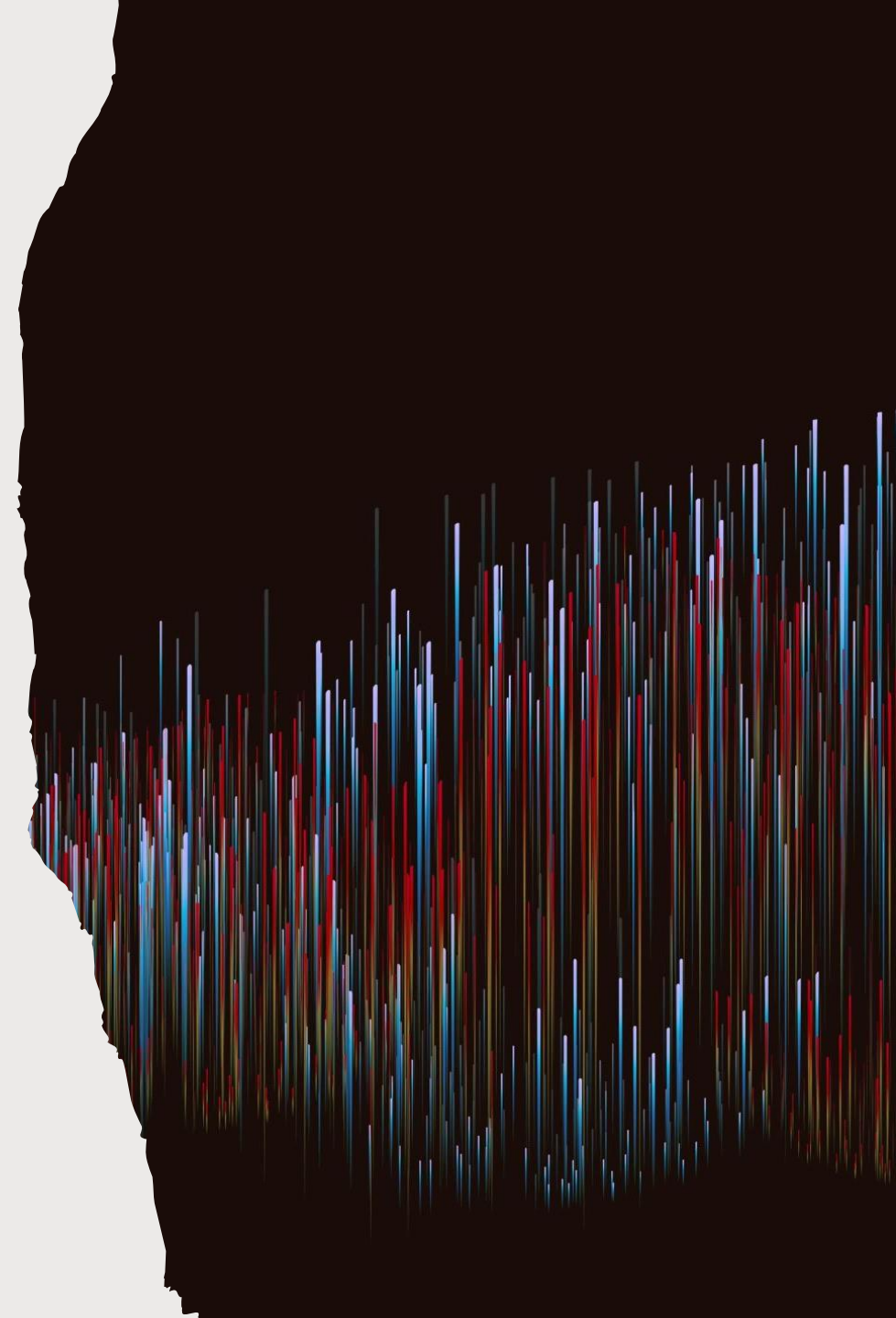


MEASURE X UPDATE

CBOC

June 3, 2021



MEASURE X OVERVIEW

- Measure X Bond Measure approved by the voters in November 2015
- \$148m. for facilities for increased/increasing enrollments
- Phase I—planning began in 2016 for 4 projects
- Phase II—planning began in 2020 for 4 additional projects

MEASURE X PHASE I

Bayside Academy--new gym and locker rooms

Abbott MS—new gym and locker rooms and additional classrooms

Borel MS—new gym and locker rooms and additional classrooms

New elementary school in Foster City for 400–420 students

BAYSIDE GYM AND LOCKER ROOMS

Planning Team

- School Team of parent leaders and staff
- John Cosmos, Principal and Megan Gurka, Assistant Principal
- District Facilities Team

Architect: QKA

General Contractor: Rodan

SMFCSD Construction Project Manager: Kevin Sanders





BAYSIDE GYM AND LOCKER
ROOMS EXTERIOR

BAYSIDE LOCKER ROOMS AND GYM FROM SCHOOL LOOKING NORTH





BAYSIDE GYM INTERIOR

BAYSIDE GYM AND LOCKER ROOMS: STATUS

- COMPLETED, ready for use
- Total budget—construction and soft costs: \$14,464,924

ABBOTT CLASSROOMS, GYM AND LOCKER ROOMS

- 6 additional classrooms
 - 2 new on top of the locker rooms
 - 4 created from existing spaces/conversion
- New gym and locker rooms
- Planning Team
 - School Team of parent leaders, previous administration, and staff with later assistance from Jeremy Packman, Principal, and Walter Valencia, Assistant Principal
 - District Facilities Team
- Architect: CAW
- General Contractor: Rodan
- SMFCSD Construction Project Manager: Mark Sherrill



ABBOTT LOCATION



Alameda de las Pulgas



ABBOTT EXTERIORS

ABBOTT GYM INTERIOR





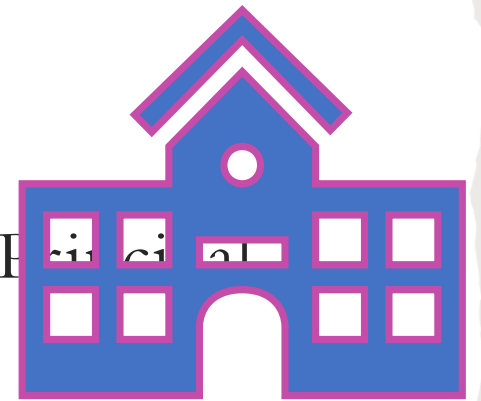
ABBOTT INTERIOR
WITH BLEACHERS OPEN

ABBOTT CLASSROOMS, GYM AND LOCKER ROOMS: STATUS

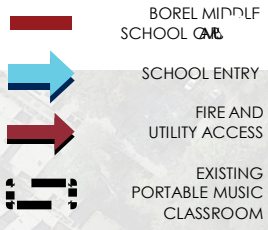
- Classrooms COMPLETED, ready for use August 2020
- Gym and Locker Rooms COMPLETED March 2021
- Total budget—construction and soft costs: \$22,924,251

BOREL CLASSROOMS, GYM AND LOCKER ROOMS

- 8 additional classrooms
 - 6 new
 - 2 created from existing spaces/conversion
- New gym and locker rooms
- Planning Team
 - School Team of parent leaders and staff
 - Kenyetta Cook, Principal, and Jessica Notte, Assistant Principal
 - District Facilities Team
- Architect: CSDA
- General Contractors: Rodan and Beals Martin
- SMFCSD Construction Project Manager: Bob Price



LEGEND



BOREL LOCATION





BOREL EXTERIOR —
GYM AND LOCKER ROOMS



BOREL GYM INTERIOR

BOREL LOCKER ROOM





BOREL CLASSROOM WINGS
LOOKING TOWARD GYM

BOREL CLASSROOMS, GYM AND LOCKER ROOMS: STATUS

- Classrooms 7 COMPLETED, ready for use August 2020; one classroom renovation underway Summer 2021
- Gym and Locker Rooms COMPLETED March 2021
- Total budget—construction and soft costs:
\$26,379,430

NEW SCHOOL IN FOSTER CITY— BEACH PARK ELEMENTARY SCHOOL

- 17 classrooms built around collaboration areas, multipurpose room, library/resource center, administration building, outdoor play areas and learning nodes
- Planning Team
 - Original Team: parent leaders & staff from existing FC schools
 - Finishing: Amy Snow, Beach Park School Principal, and staff
 - District Facilities Team
- Architect: HMC
- General Contractors: Overaa
- SMFCSD Construction Project Manager: Kevin Sanders





BEACH PARK SCHOOL LOOKING
NORTH FROM ADMINISTRATION
BUILDING ALONG SHELL BLVD.



BEACH PARK ELEMENTARY SCHOOL
ADMINISTRATION BUILDING

BEACH PARK SCHOOL CLASSROOM



BEACH
PARK
LIBRARY



BEACH PARK SCHOOL: STATUS

- Nearing completion with the addition of Lunch Shade Structure and Walkway Canopy that was not within budget until January 2021
- COMPLETED May 2021; opened to students and staff May 10, 2021
- Total budget—purchase of site, construction and soft costs: \$75,918,830 (Measure L, X and other sources)

MEASURE X
PHASE II:
OVERVIEW

New Elementary School in North
Central San Mateo

New Science and Drama
Buildings at Bowditch MS

New Multipurpose Building and
additional classrooms at Sunnybrae
and George Hall Schools

FIVE MAJOR PHASES IN THE PROCESS FOR A SCHOOL BUILDING PROJECT

Technical Studies,
Location and
Schematic Design
Phase

Construction
Documentation and
Specifications Phase

Division of State
Architect Review
and approval

Public Bidding
Phase and Award
of Contract to
General
Contractor

Site Mobilization
and Construction

NEW ELEMENTARY SCHOOL IN NORTH CENTRAL SAN MATEO

- Recommendations for North Central School Vision and Program planned for June 10 from independent educational consultancy firm
- Start of school facility planning aligned with school vision and program projected to begin in second half of 2021 after Board direction
- Original Budget (250 student school): \$23 million

BOWDITCH PROJECT

MAJOR ELEMENTS:
NEW SCIENCE AND
DRAMA BUILDINGS

ARCHITECT: HED

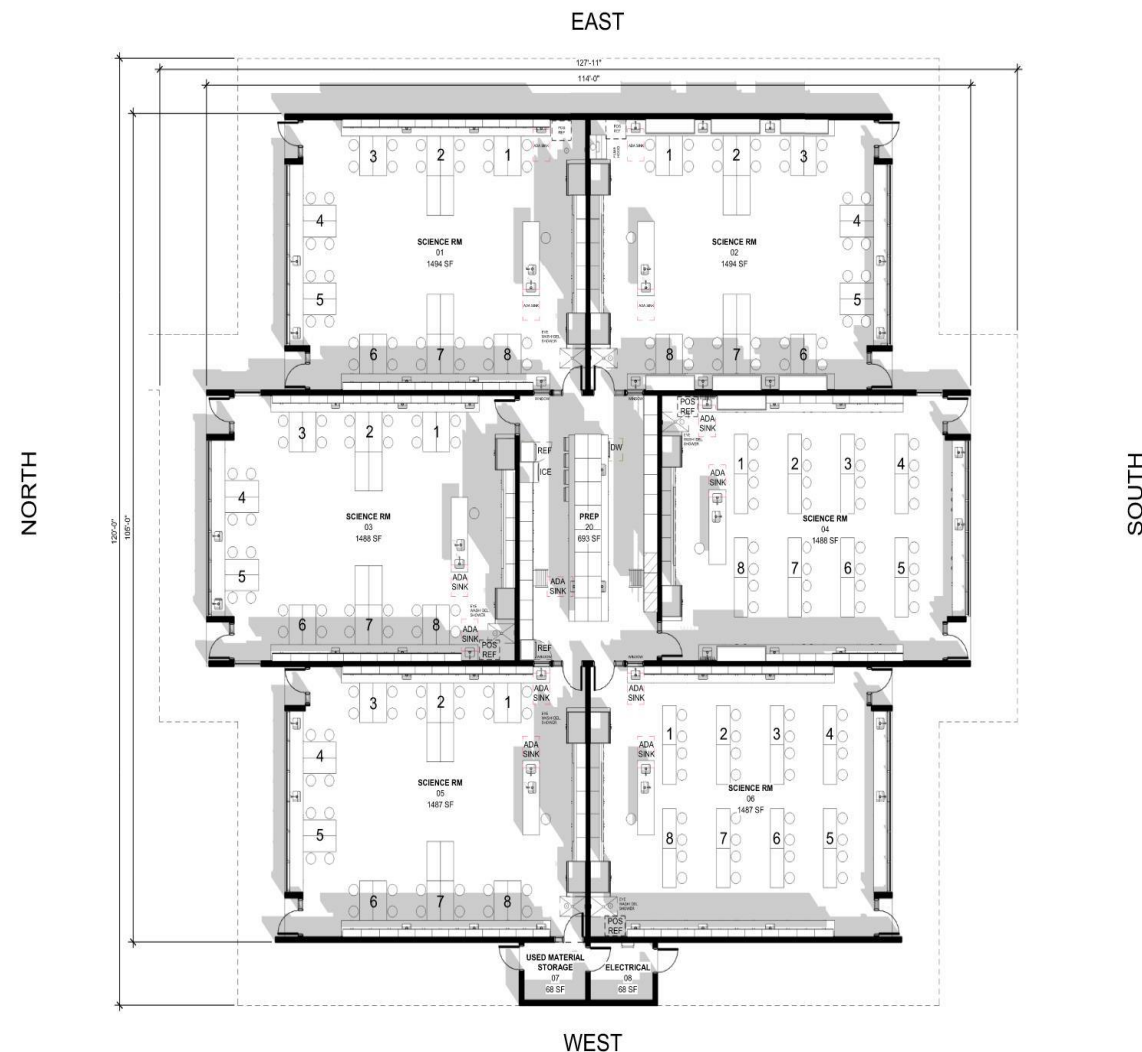
TOTAL PROJECT
BUDGET: \$19.5M

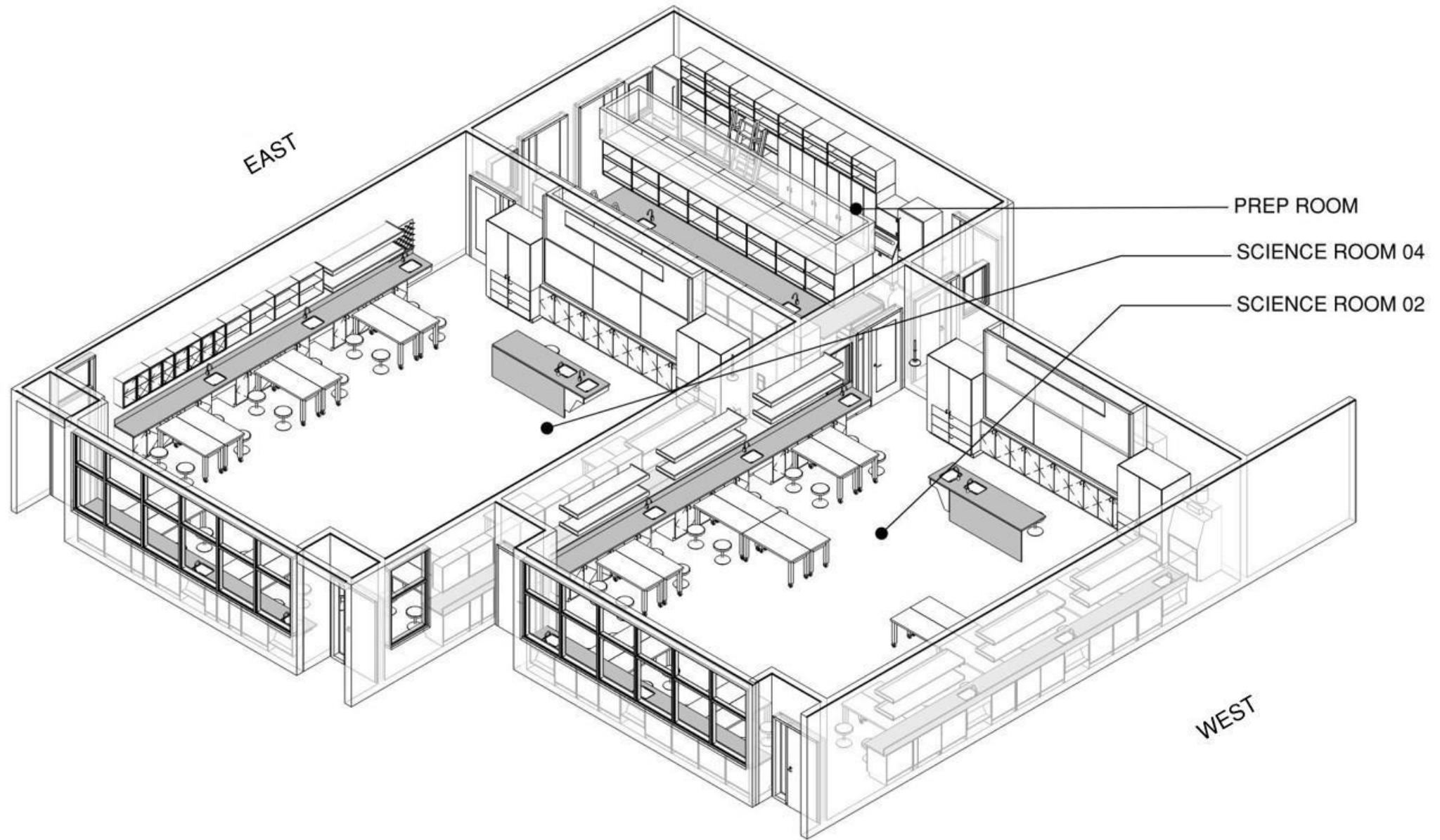
BOWDITCH EXTERIORS: DRAMA AND SCIENCE BUILDINGS



BOWDITCH MIDDLE SCHOOL
CENTER CLASSROOMS CLERESTORY MONITORS
4 NOVEMBER, 2020

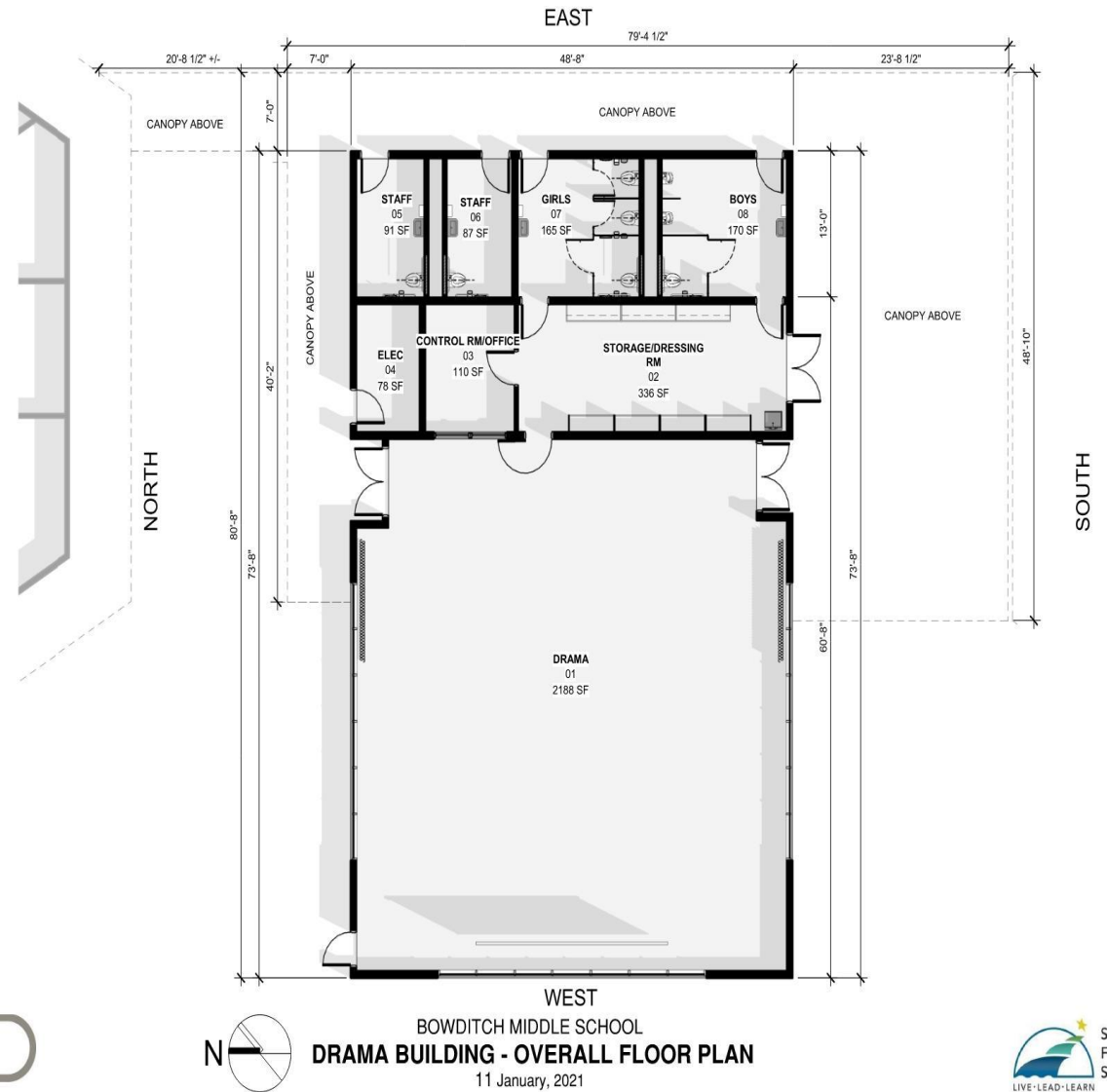
NEW SCIENCE BUILDING INTERIOR



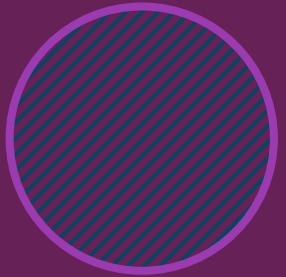


NEW DRAMA BUILDING INTERIOR

HED



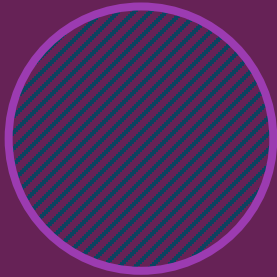
CURRENT PROJECTED TIMELINE—BOWDITCH NEW SCIENCE AND DRAMA BUILDINGS



Technical Studies,
Location and
Schematic Design
Phase

DONE

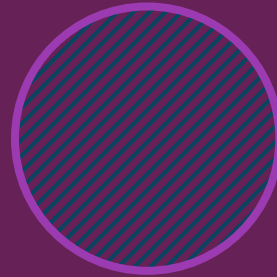
Summer 2020–
Spring 2021



Construction
Documentation
and Specifications
Phase

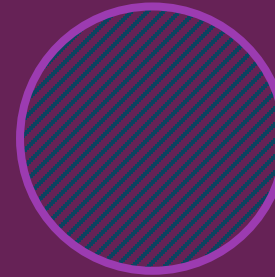
**ALMOST
DONE**

Summer 2021



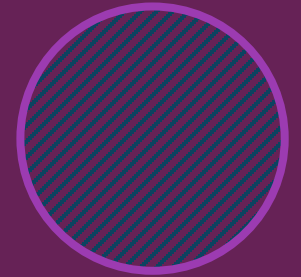
Division of State
Architect Review
and Approval

Summer 2021–
Winter 2022



Public Bidding
Phase and Award
of Contract to
General
Contractor

Spring 2022



Site Mobilization
and Construction

Summer 2022–
end of 2023

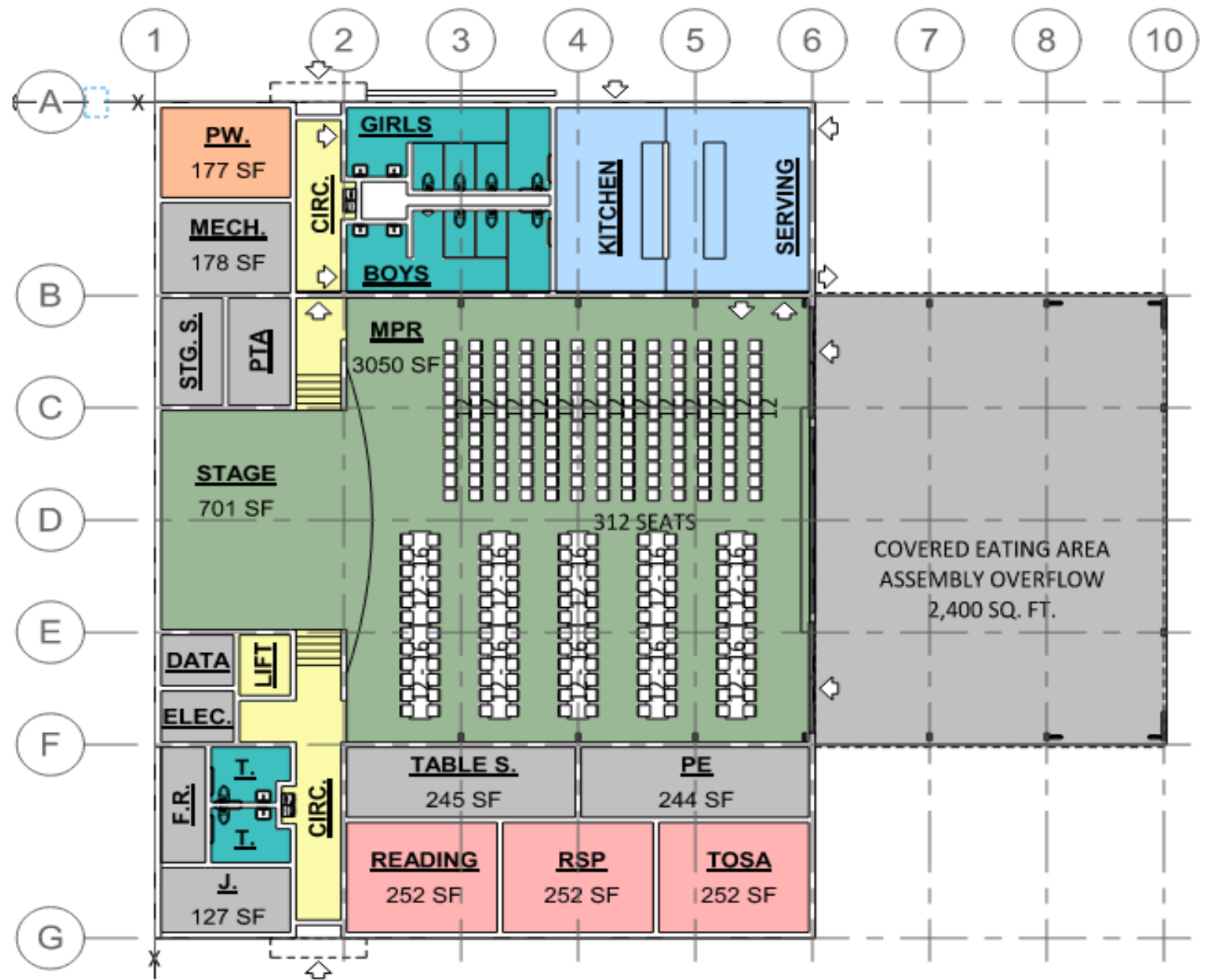
SUNNYBRAE AND GEORGE HALL PROJECTS

- District Standards with unique designs for each school
- Scope: Multipurpose Room
Small instructional rooms/offices to free up classrooms for enrollment growth
Kitchen and serving room
Outside areas
Exterior improvements
Restrooms and storage room
Total Budget: \$11.6 million each

SUNNYBRAE
CAMPUS
WITH NEW
MULTI-
PURPOSE
BUILDING:
LOCATION



SUNNYBRAE MULTI- PURPOSE BUILDING PLAN







GEORGE HALL MULTIPURPOSE BUILDING PLAN



George Hall Elementary School - Multi Purpose Building



FLOOR PLAN

Jan 2021



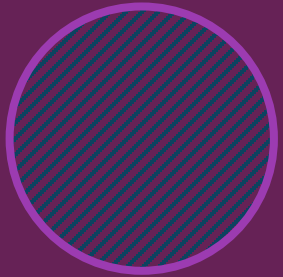


GEORGE HALL EXTERIOR FROM LUNCH
SHELTER (BUILT 2018)

GEORGE HALL MULTIPURPOSE BUILDING FROM PLAYGROUND

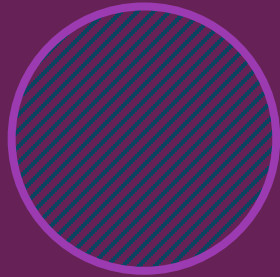


CURRENT PROJECTED TIMELINE—GEORGE HALL AND SUNNYBRAE MULTIPURPOSE BUILDINGS



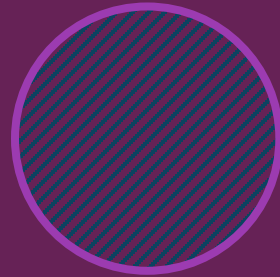
Technical Studies,
Location and
Schematic
Design Phase

COMPLETED



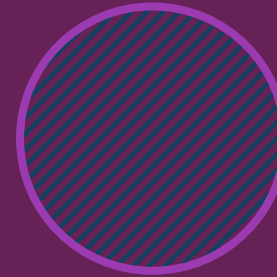
Construction
Documentation
and
Specifications
Phase

NEARING
COMPLETION



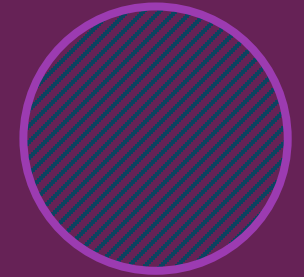
Division of
State Architect
Review and
Approval

Summer 2021–
Early 2022



Public Bidding
Phase and
Award of
Contract to
General
Contractor

Spring 2022



Site
Mobilization
and
Construction

Summer 2022–
Summer 2023

QUESTIONS
AND
COMMENTS

