



# MEASURE T UPDATE— MULTIPURPOSE BUILDINGS

SAN MATEO–FOSTER CITY SCHOOL DISTRICT

BOARD OF TRUSTEES

JUNE 24, 2021

# PURPOSES OF TONIGHT'S UPDATE

- Background
- Overview of the Planning Process for the Multipurpose Buildings
- General Scope—District Standards
- Exterior and Interior Renderings—Phase I
- Next Steps

# BACKGROUND

- SMFCSD's Facilities Master Plan (FMP, adopted July 30, 2020) included as Immediate Priorities the construction of four Multipurpose Buildings at the remaining sites with the LGIs (Large Group Instruction) constructed in the 1960's at:  
Highlands      LEAD      Meadow Heights      Parkside Montessori
- Measure T, authorized by the voters, in November 2020 authorized bond funding for the Immediate Priorities in the FMP

# Major Phases in the Project Process (full projected timeline to be developed by Fall 2021 after Technical Studies are completed)

---

**Technical  
Studies,  
Location and  
Initial Design  
Phase**

---

Construction  
Documentation  
and  
Specifications  
Phase

---

Division of State  
Architect Review  
and approval

---

Public Bidding  
Phase and  
Award of  
Contract to  
General  
Contractor

---

Site Mobilization  
and Construction

**Current Phase**

# Overview of District Standards for Multipurpose Buildings

- MPR: Sized to fit 50% of projected student enrollment at lunch tables; larger capacity for audience-style seating
- Stage area with curtains and a lift for accessibility
- Built in projector and drop-down screen and audio
- Warming kitchen and serving area
- Restrooms
- Custodial Room
- Table and chair storage
- Space for PTA Storage
- PE Office and storage
- Additional space as needed to free up classrooms for enrollment growth

# WHAT'S HAPPENED TO DATE:

- Architects selected from SMFCSD's Qualified Architect Pool—
  - LEAD—HKIT Architects
  - Highlands—LPA Architects
  - Meadow Heights—Lionakis Architects
  - Parkside Montessori—HMC Architects
- Technical Studies begun for each site
- School Facility Team meetings held with each site focused on location and conceptual exteriors and interiors
- First Neighborhood/School Community Meetings held for each site providing project scope, location and conceptual exteriors and interiors

# Major Location Considerations



Seen as part of the school and easily accessible for all users



Minimize the need to relocate existing buildings or utilities lines so that budget is protected for the project itself where possible



Minimize disruption to teaching and learning during construction

# Major considerations for Exterior Design/Massing/Building Height



FIT WITH THE CAMPUS

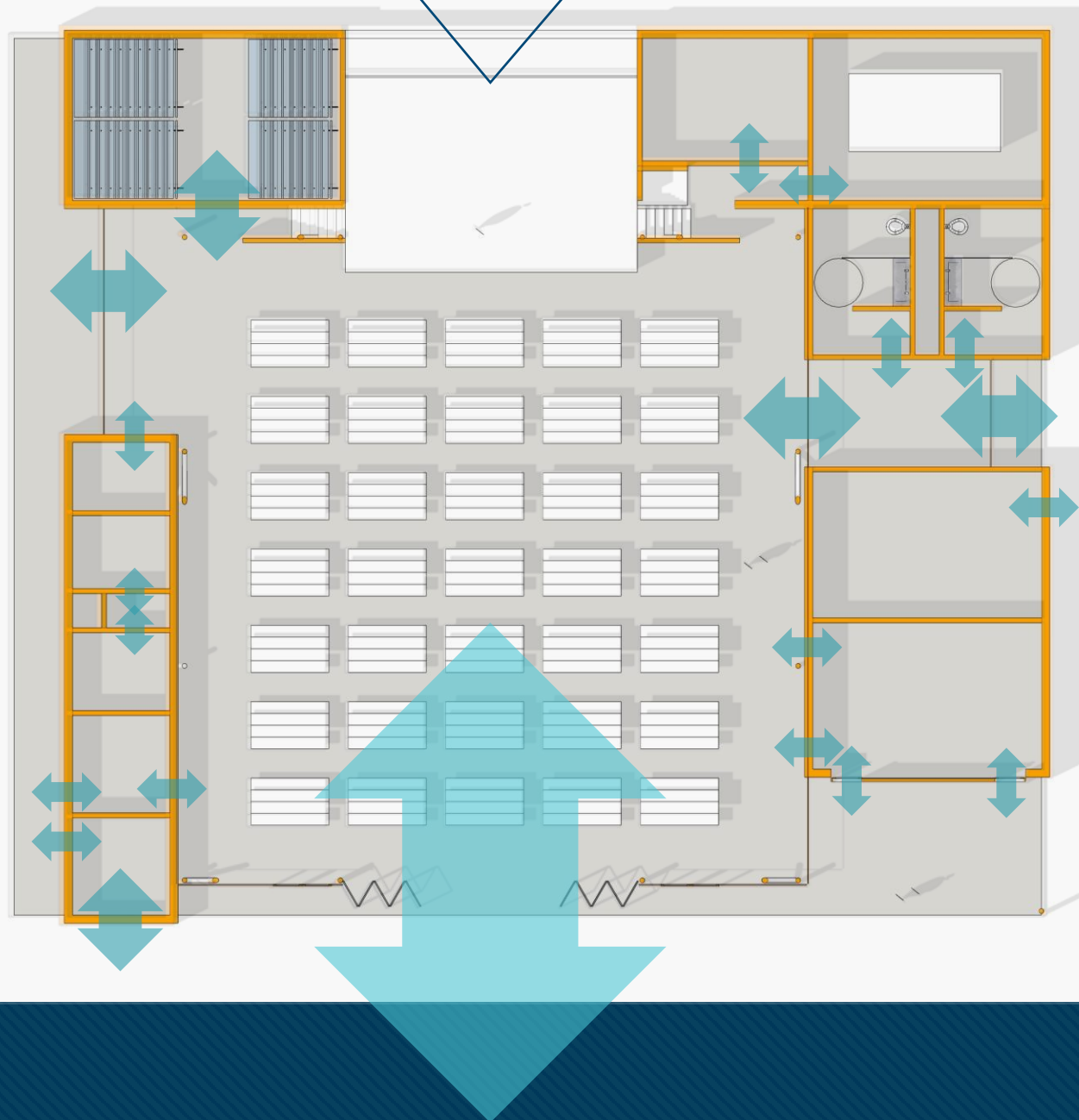


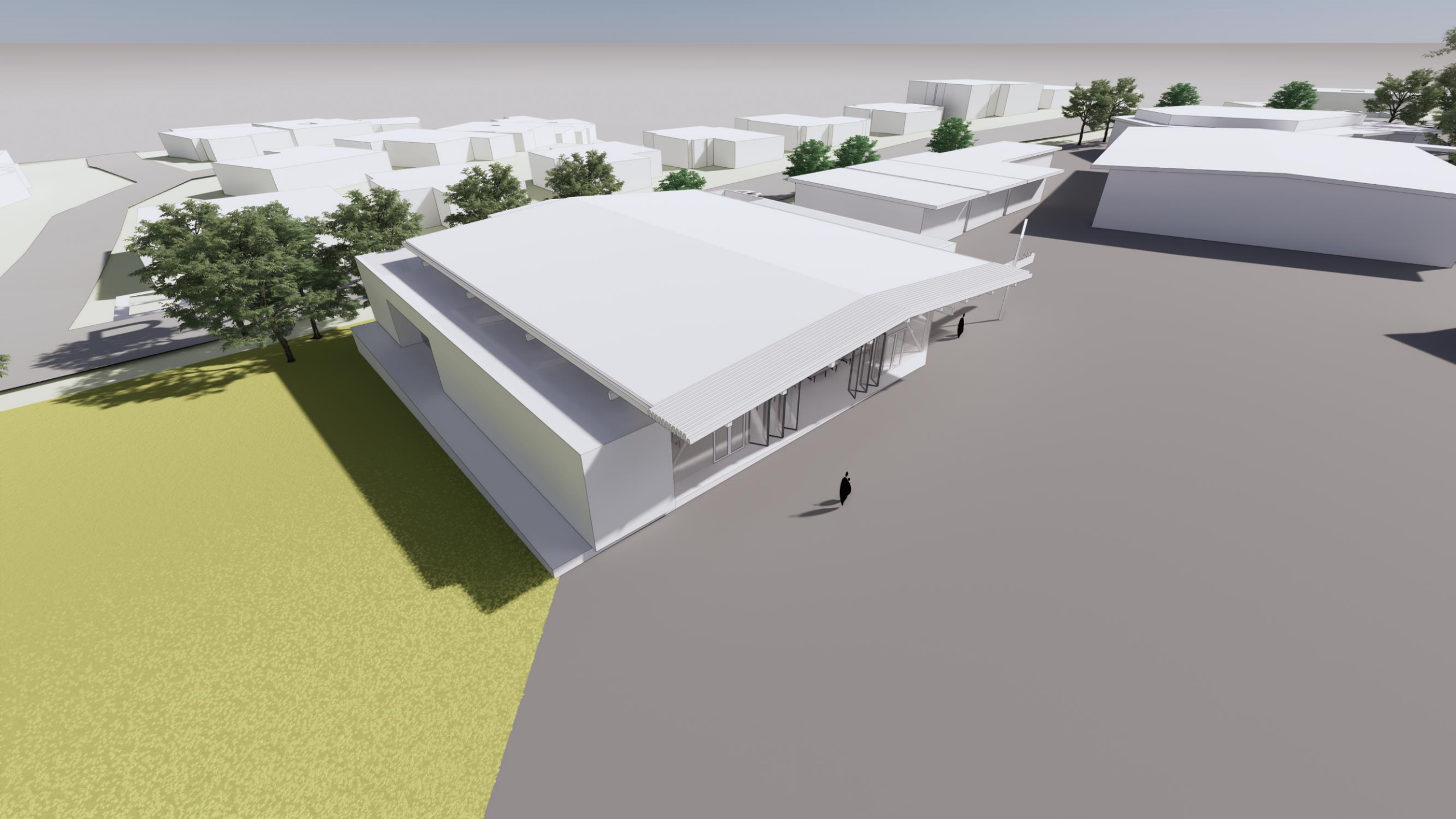
FIT WITH THE SURROUNDING  
NEIGHBORHOOD

A decorative graphic on the left side of the slide, consisting of a network of white lines and small circles on a blue gradient background, resembling a circuit board or a stylized tree structure.

# HIGHLANDS' MULTIPURPOSE BUILDING







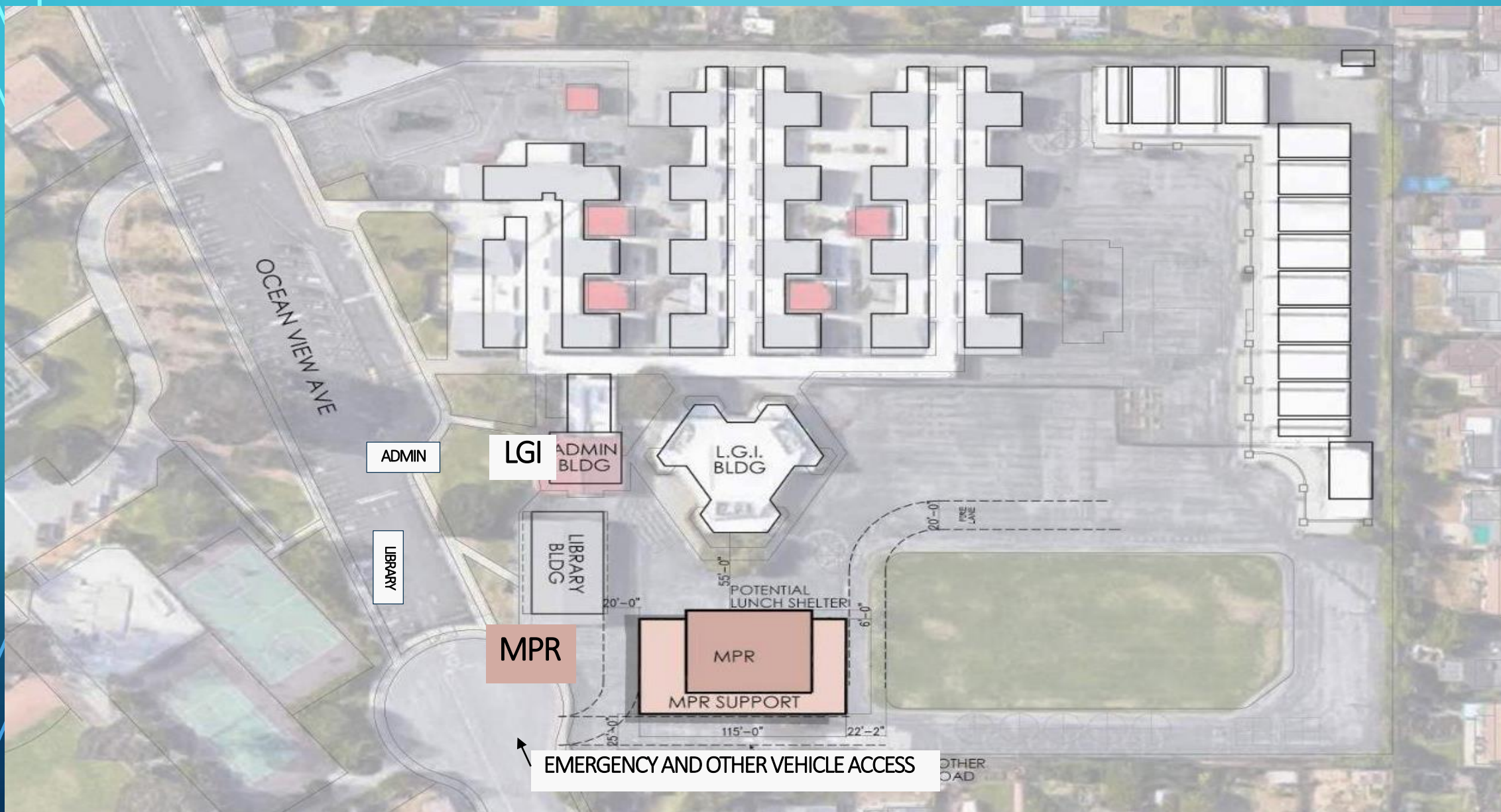
# THE BEAR DEN



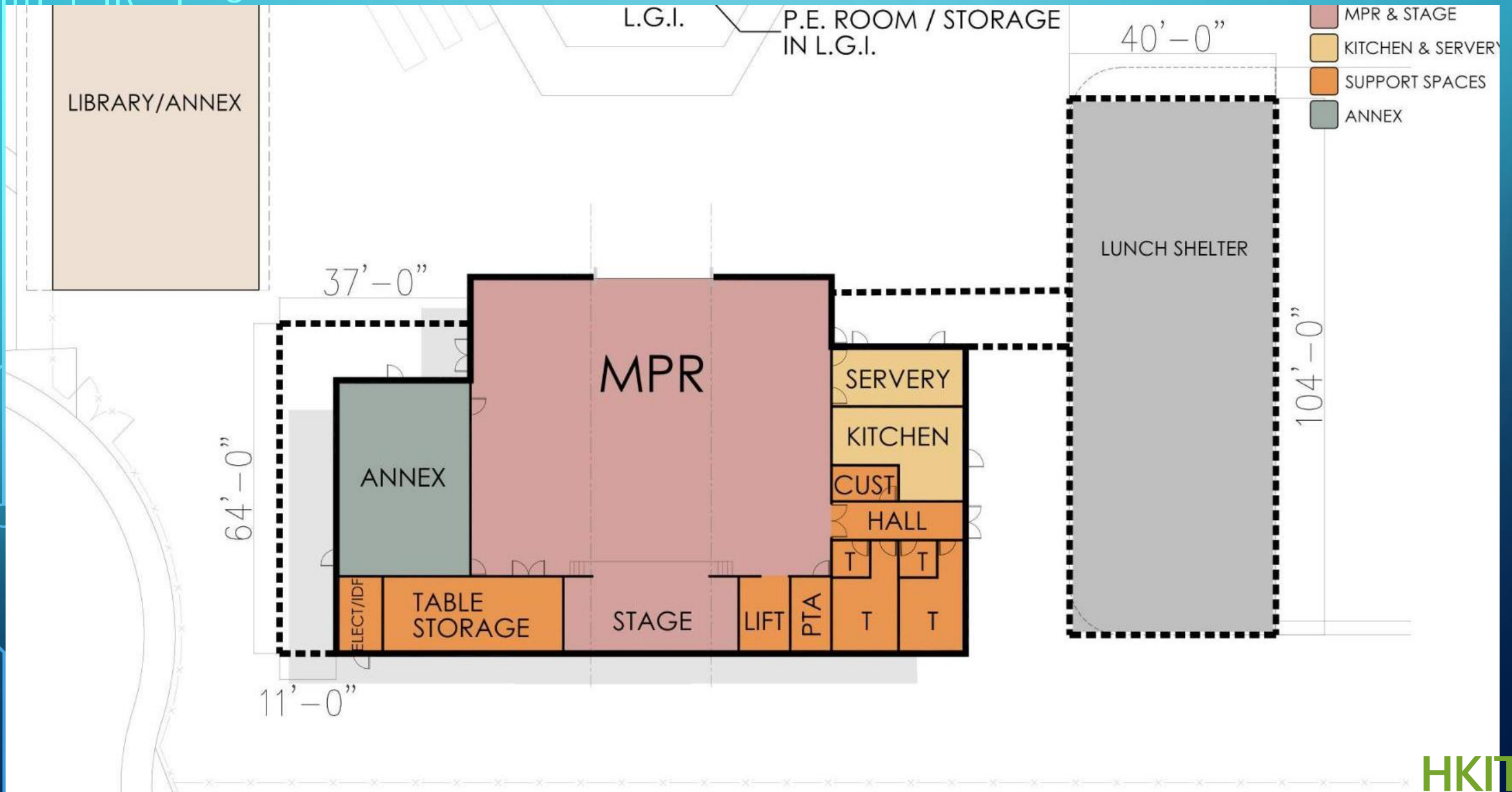


A decorative graphic on the left side of the slide consisting of white lines and circles on a blue gradient background, resembling a circuit board or a stylized tree structure.

# LEAD'S MULTIPURPOSE BUILDING



# Multipurpose Floor Plan



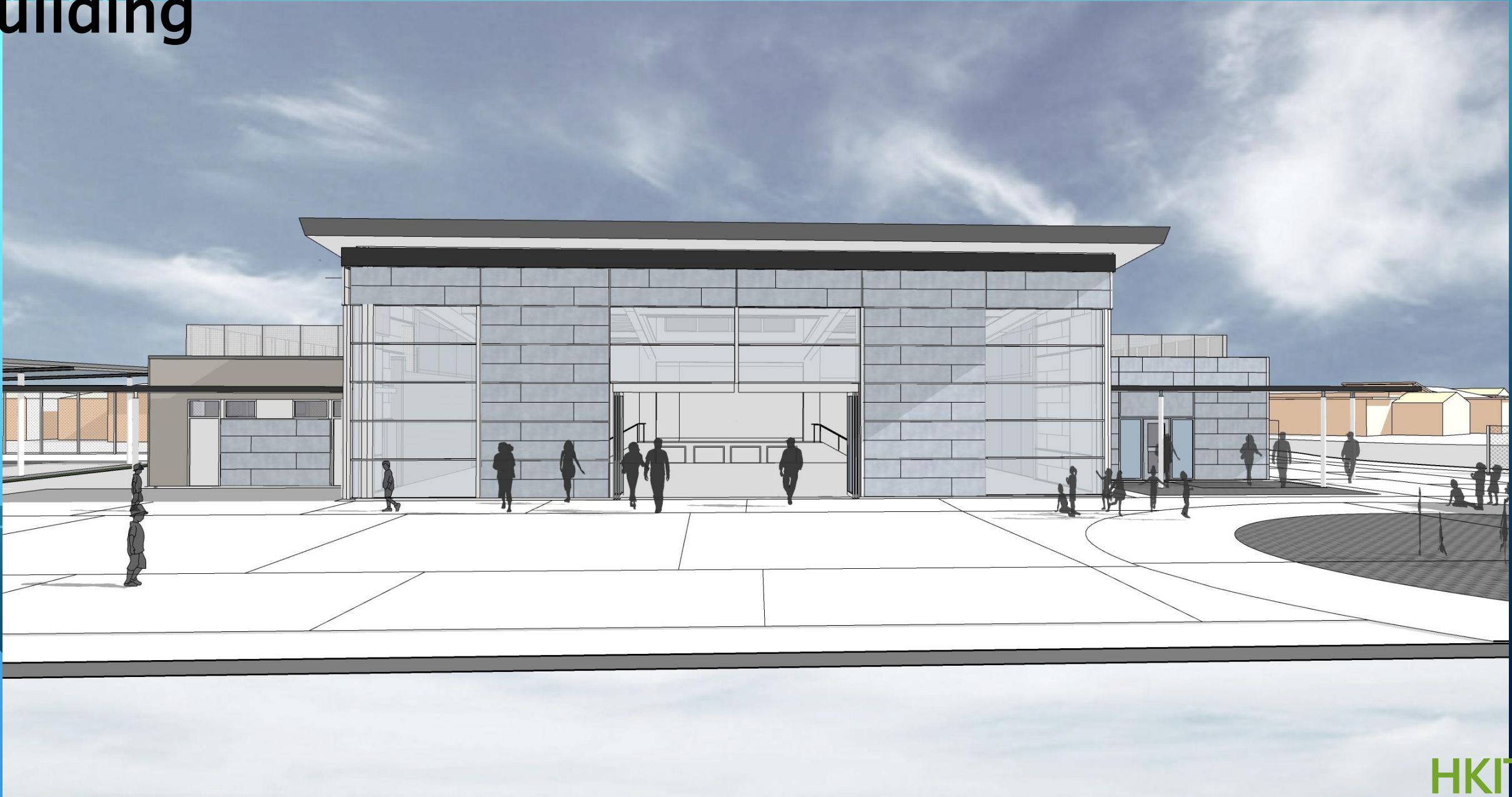
# View from Ocean View Avenue



# Multipurpose View from the area between the Library and LGI



# Multipurpose view looking south toward the new building

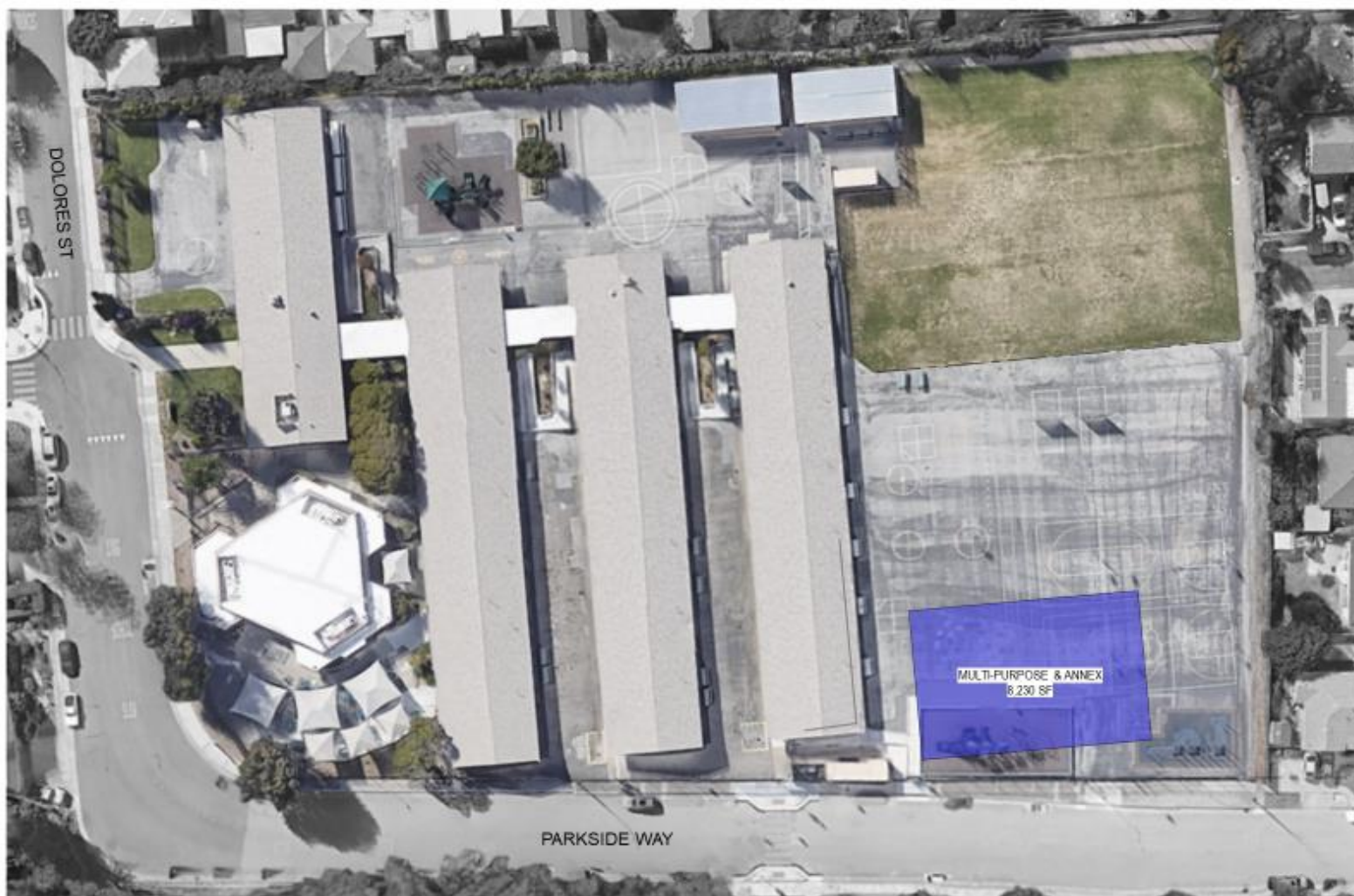


# VIEW FROM THE NORTHEAST WITH THE LUNCH STRUCTURE TO THE SIDE OF THE MULTIPURPOSE BUILDING



A decorative graphic on the left side of the slide consisting of white lines and circles on a blue gradient background, resembling a circuit board or a stylized tree structure.

# MEADOW HEIGHTS' MULTIPURPOSE BUILDING



## PROPOSED LOCATION

MEADOW HEIGHTS MULTI-PURPOSE BUILDING    MAY 28, 2021

LIONAKIS



## Neighborhood Context

EXISTING SITE

MEADOW HEIGHTS MULTI-PURPOSE BUILDING JUNE 10, 2021

LIONÄKIS



NEIGHBORING  
HOMES

CLASSROOM  
WING

## View from Parkside Way (across from the back of Beresford Park)



The background is a blue gradient. In the corners, there are white line art elements resembling circuit boards or neural networks, with lines and small circles connecting them.

# PARKSIDE MONTESSORI'S MULTIPURPOSE BUILDING



SMFCSD Parkside Montessori Proposed Site Plan

HMC Architects

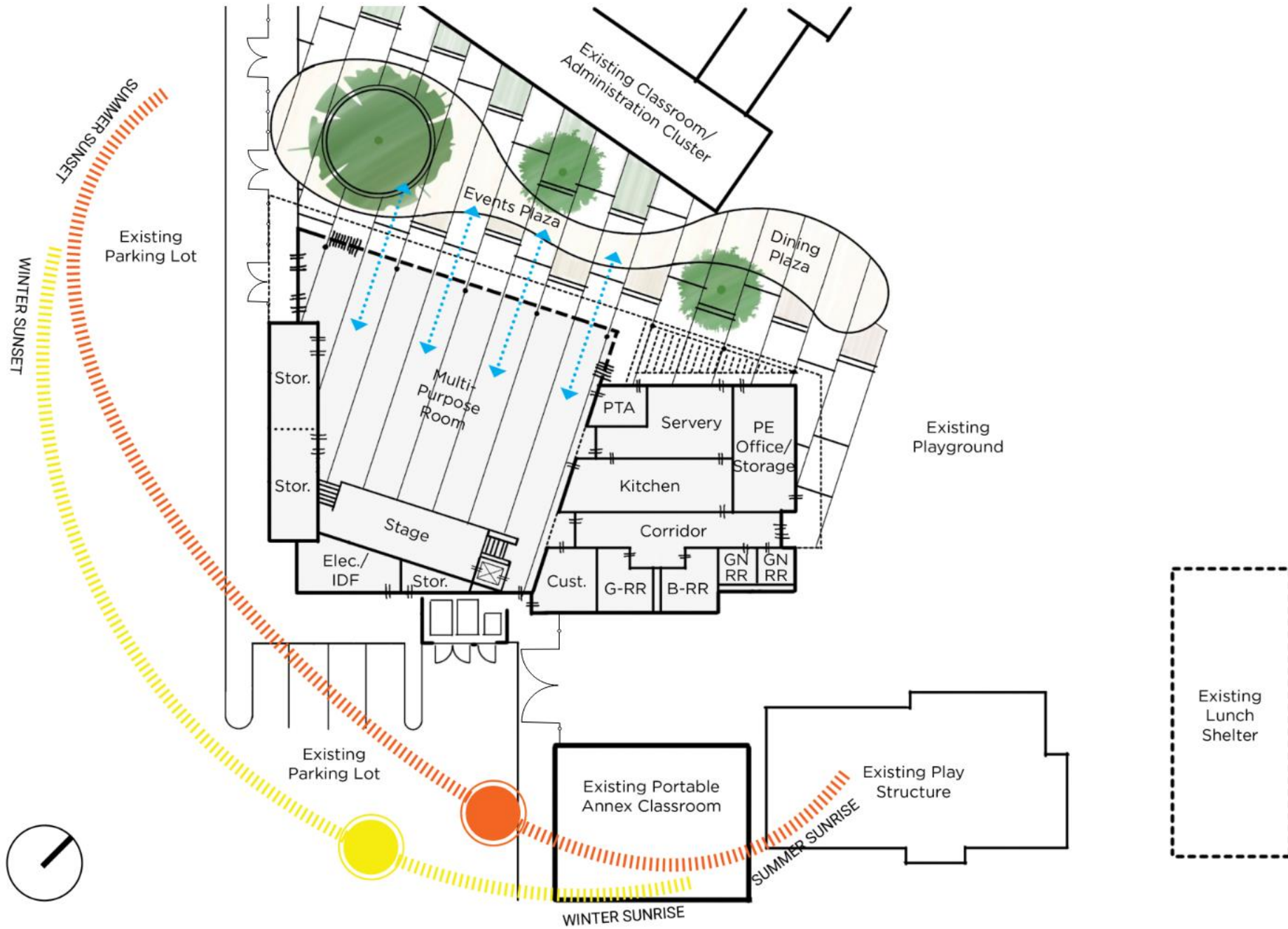


# A NOTE ABOUT PARKSIDE MONTESSORI PROJECT:

The Facilities Master Plan for the New Decade includes funding also for additional space to expand its program to grades 8. The Multipurpose Building project includes a new modular building on the north side of the site for additional assembly/Makers'/Science space, and smaller rooms for small group instruction and support offices. This building which will be modular demolished for the location of the new Multipurpose Building and redesigned parking area.







Looking east  
from the  
parking lot



Looking from  
the  
administration  
/ classroom  
wing across  
the courtyard



Looking from  
the  
east/black  
top play area  
toward the  
parking lot



# Multipurpose Buildings—Next Steps

- Technical studies completed
- Schematic design work completed (Phase I of Project Process)
- Independent Cost Estimates for each to align with projected budgets
- Architects to begin design development phase (Phase II)
- Projected Timeline for each project
- Continued School Facilities Team and Neighborhood/Community Meetings as each project progresses

The background features a dark blue field on the right and a light blue field on the left, separated by a diagonal line. A thin, dark blue line runs parallel to the diagonal line, and a thin, light blue line runs parallel to the dark blue line.

Questions/Comments