

San Mateo–Foster City School District

Measure X
Bond Oversight Committee Meeting
1 August 2017
6:15 PM, District Office

BOND OVERSIGHT COMMITTEE MEASURE X

PLACE: SAN MATEO-FOSTER CITY SCHOOL DISTRICT
1170 CHESS DRIVE, FOSTER CITY, CA 94404
BOARD ROOM

DATE: AUGUST 1, 2017 – Meeting Agenda

TIME: 6:15PM OPEN SESSION

1. Call to Order
2. Roll Call
3. Public Comment
Anyone wishing to address the BOC may do so at this time
4. Approval of Minutes
Draft minutes from the May 23, 2017, meeting will be reviewed and vote for approval will be taken
5. Review of Agenda
6. Review of the Financial Expenditures
7. Program Status Update
8. Next Meeting & Tentative Future Meetings Schedule
Future Meetings:
To be scheduled
9. Future Agenda Items
10. Adjourn
Attachments
 - A. Draft Minutes of May 23, 2017 BOC meeting
 - B. Measure X Summary as of May 31, 2017
 - C. Quarterly Expenditure Report as of May 31, 2017

Measure X Financials – Summary Report

SAN MATEO - FOSTER CITY SCHOOL DISTRICT MEASURE X SUMMARY

AS OF MAY 31, 2017

	(A) TOTAL BUDGET (APPROVED BY BOT)	(B) TOTAL EXPENDITURES TO DATE THROUGH 5/31/17	(C) TOTAL ENCUMBERED AS OF 5/31/17	(A-B-C) BUDGET SET ASIDE AS OF 5/31/17	(A-B-C-D) FUNDS AVAILABLE AS OF 5/31/17
Completed Projects	\$ -	\$ -	\$ -	\$ -	-
Phase I Projects	72,400,000 (1)	521,216	117,569	-	71,761,215
Phase II Projects	75,700,000 (1)	-	50,400	-	75,649,600
Facilities Dept Salaries/Expenses	-	320,609	49,294 (2)	-	(369,903)
Budget vs. Bond \$\$ Approved by voters	(100,000) (1)	-	-	-	(100,000)
TOTAL MEASURE X	\$ 148,000,000	\$ 841,825 0.6%	\$ 217,263 0.1%	\$ - 0.0%	\$ 146,940,913 99.3%
MEASURE X INTEREST INCOME	\$ 252,414 (3)				\$ 252,414

NOTES:

(1) - Budgets and phasing approved on 1/21/16 by Board of Trustees.

(2) - Current fiscal year only.

(3) - Earned during fiscal year 7/1/15-6/30/16. Available to be used on Measure X projects.

Measure X Financials – Summary Report

BOND OVERSIGHT COMMITTEE - May 31, 2017

MEASURE X PROJECTS - PHASE I

(Approved by Board of Trustees on 1/21/16)

Project Name	Meas X Bond Code	Sub- Project	Facility Master Plan Budget (Construction Costs)	Facility Master Plan Budget ("Soft" Costs) NOTE 1	Budget Transfer	TOTAL Master Budget	Facility Plan Budget	Other Funding Sources (Memo only)	Construction Start Date	Actual and/or Estimated Completion Date	Construc- tion Percent Complete	TOTAL ACTUAL (Project Expenditures through 5/31/17)	TOTAL ENCUMBERED (as of 5/31/17)	MEASURE X Budget Balance
Abbott Gym/Class (Phase I)	A		14,461,538.00	4,338,462.00		18,800,000.00						156,037.62	96,617.51	18,547,344.87
Borel Gym/Class (Phase I)	A		14,461,538.00	4,338,462.00		18,800,000.00						115,822.78	13,925.64	18,670,251.58
Charter Square (Phase I)	A		13,076,923.00	3,923,077.00		17,000,000.00						-	-	17,000,000.00
Bayside Gym (Phase I)	I		8,307,692.00	2,492,308.00		10,800,000.00						249,355.41	7,025.58	10,543,619.01
Set aside for inflation etc.			5,384,615.00	1,615,385.00		7,000,000.00						-		7,000,000.00
TOTAL ACTIVE PROJECTS						72,400,000.00						521,215.81	117,568.73	71,761,215.46
Administration	N/A											320,608.93	49,293.86	(369,902.79)

NOTE 1: "Soft Costs" include annual allocation of Meas X Administrative Costs

Measure X Bond Codes:

M=Modernization
S=Safety and Security
A=Additional Classrooms
I=Overall Improvement

Measure X Financials – Summary Report

BOND OVERSIGHT COMMITTEE - May 31, 2017
MEASURE X PROJECTS - PHASE II

(Approved by Board of Trustees on 1/21/16)

Project Name	Meas X Bond Code	Sub- Project	Facility Master Plan Budget (Construction Costs)	Facility Master Plan Budget ("Soft" Costs) NOTE 1	Budget Transfer	TOTAL Master Budget	Facility Plan Budget	Other Funding Sources (Memo only)	Construction Start Date	Actual and/or Estimated Completion Date	Construc- tion Percent Complete	TOTAL ACTUAL (Project Expenditures through 9/31/17)	TOTAL ENCUMBERED (as of 5/31/17)	MEASURE X Budget Balance
Bowditch (Phase II)	A, M		15,000,000.00	4,500,000.00		19,500,000.00						-	50,400.00	19,449,600.00
George Hall (Phase II)	A		9,230,769.00	2,769,231.00		12,000,000.00						-		12,000,000.00
Sunnybrae (Phase II)	A		10,923,077.00	3,276,923.00		14,200,000.00						-		14,200,000.00
N Central (Phase II)	A		17,692,308.00	5,307,692.00		23,000,000.00						-		23,000,000.00
Set aside for inflation etc.			5,384,615.00	1,615,385.00		7,000,000.00						-		7,000,000.00
TOTAL ACTIVE PROJECTS						75,700,000.00						0.00	50,400.00	75,649,600.00
Administration	N/A													

NOTE 1: "Soft Costs" include annual allocation of Meas X Administrative Costs

Measure X Bond Codes:

M=Modernization
S=Safety and Security
A=Additional Classrooms
I=Overall Improvement



SAN MATEO-
FOSTER CITY
SCHOOL DISTRICT

Measure X Financials – Quarterly Expenditures

SAN MATEO - FOSTER CITY SCHOOL DISTRICT
MEASURE X

AS OF MAY 31, 2017

QUARTERLY EXPENDITURE REPORT

	(A) TOTAL EXPENDITURES TO DATE THROUGH 1/31/17	(B) RECATEGORIZED FROM ACTIVE TO COMPLETED PROJECTS	(C) QUARTERLY EXPENDITURES 2/1/17-5/31/17	(A+B+C) TOTAL EXPENDITURES TO DATE THROUGH 5/31/17
Completed Projects	\$ -	\$ -	\$ -	\$ -
Active Projects	405,754	-	115,462	521,216
Facilities Department Staff	206,152	-	114,457	320,609
TOTAL MEASURE X	\$ 611,906	\$ -	\$ 229,919	\$ 841,825

Measure X Financials – Quarterly Expenditures

MEASURE X EXPENDITURE REPORT 2/1/37-5/31/17	
DESCRIPTION	AMOUNT
ADJ PERS SHERRL 5258 J421795 T Total	\$ (258.29)
BKF ENGINEERS Total	32,731.00
BOX INC Total	720.00
C8172717 CADIZ JOS Total	(125.00)
C8173787 BB CADIZ Total	(125.00)
CALIFORNIA GEOLOGICAL SURVEY Total	3,600.00
CDW GOVERNMENT INC. Total	2,541.58
CHRISTY WHITE ACCOUNTANCY CORP Total	9,500.00
CLEARY CONSULTANTS INC Total	13,950.00
CODY ANDERSON WASNEY Total	12,540.65
CSDA DESIGN GROUP Total	6,073.86
EMC PLANNING GROUP INC. Total	4,701.46
EPS INC Total	6,000.00
FLYERS ENERGY LLC Total	609.88
LIGHTSPEED TECHNOLOGIES INC. Total	2,318.55
OFFICE DEPOT Total	322.95
ORBACH HUFF SUAREZ & HENDERSON Total	761.38
PAYROLL 02/28/2017 Total	18,595.75
PAYROLL 02/28/2017(BENEFITS) Total	6,900.74
PAYROLL 03/31/2017 Total	18,595.75
PAYROLL 03/31/2017(BENEFITS) Total	6,900.74
PAYROLL 04/28/2017 Total	18,745.28
PAYROLL 04/28/2017(BENEFITS) Total	6,889.48
PAYROLL 05/31/2017 Total	18,595.75
PAYROLL 05/31/2017(BENEFITS) Total	6,900.74
PRICE, ROBERT Total	38.42
PUB CHRGS OTHR FNDS FEB Total	8.75
PUB CHRGS OTHR FNDS MAY Total	26.50
PUB CHRGS OTHR FNDS NOV Total	5.70
QUATTROCCHI KWOK ARCHITECTSINC Total	30,966.65
VISA A-J GEN FD-CHOW C FEB Total	886.00
Grand Total	\$229,919.27

Bayside STEM Gym

- ◆ On going negotiations with San Mateo regarding placement of the Gym Building.
- ◆ Design work continues.

Bayside STEM Gym

U7 FIELDS

BAYSIDE STEM ACADEMY | NEW GYMNASIUM



> BAYSIDE STEM ACADEMY GYMNASIUM | JUNE 26, 2017 | 1629.00

1

SOCCKER FIELD LAYOUT

Bayside STEM Gym

U9 FIELDS

BAYSIDE STEM ACADEMY | NEW GYMNASIUM



> BAYSIDE STEM ACADEMY GYMNASIUM | JUNE 26, 2017 | 1629.00

2

SOCCKER FIELD LAYOUT

Bayside STEM Gym

U12-13 FIELDS

BAYSIDE STEM ACADEMY | NEW GYMNASIUM



> BAYSIDE STEM ACADEMY GYMNASIUM | JUNE 26, 2017 | 1629.00

3

SOCCKER FIELD LAYOUT

Bayside STEM Gym

U14-18 FIELDS

BAYSIDE STEM ACADEMY | NEW GYMNASIUM



> BAYSIDE STEM ACADEMY GYMNASIUM | JUNE 26, 2017 | 1629.00

4

SOCCKER FIELD LAYOUT

Bayside STEM Gym



> BAYSIDE STEM ACADEMY GYMNASIUM | JULY 24, 2017 | SCHEMATIC DESIGN | 1629.00

SITE PLAN
1" = 32'



GYM BUILDING SCHEMATIC DESIGN

SITE PLAN

BAYSIDE STEM ACADEMY | LANDSCAPE



LEGEND

- 1 EXISTING TURN-AROUND & FIRE LANE
- 2 EXISTING BLACKTOP
- 3 EXISTING IRRIGATED ATHLETIC FIELD
- 4 EXISTING TREES
- 5 EXISTING FENCE
- 6 DROP OFF AT EXISTING TURN-AROUND SIDEWALK
- 7 BIKE PARKING
- 8 BACKED BENCHES, FASTENED TO PAVING (OPTION: DONOR/FUTURE)
- 9 RENOVATED ATHLETIC FIELD GRASS AREA
- 10 SHADE TREES AND MULCH SURFACING
- 11 STORMWATER TREATMENT AREA
- 12 EDUCATIONAL RAIN GARDEN WITH SCIENCE OBSERVATION STATION
- 13 EDUCATIONAL / INTERPRETIVE SIGNAGE
- 14 CONCRETE PAVING, NON-SLIP SAND WASH FINISH, NATURAL COLOR
- 15 ASPHALT PAVING
- 16 CONCRETE BAND, FLUSH
- 17 CONCRETE SEAT WALL, 12" WIDE, INTEGRAL COLOR & SKATE DETERRENCE
- 18 ORNAMENTAL PLANTING, DROUGHT TOLERANT
- 19 BACKLESS BENCHES, FASTENED TO PAVING (OPTION: DONOR/FUTURE)
- 20 BLEACHERS, 3-ROW MAX (DONOR/FUTURE ITEM)
- 21 NATIVE TREE CANOPY, MIXED DROUGHT TOLERANT SPECIES
- 22 GATE, CONNECT TO EXISTING FENCE



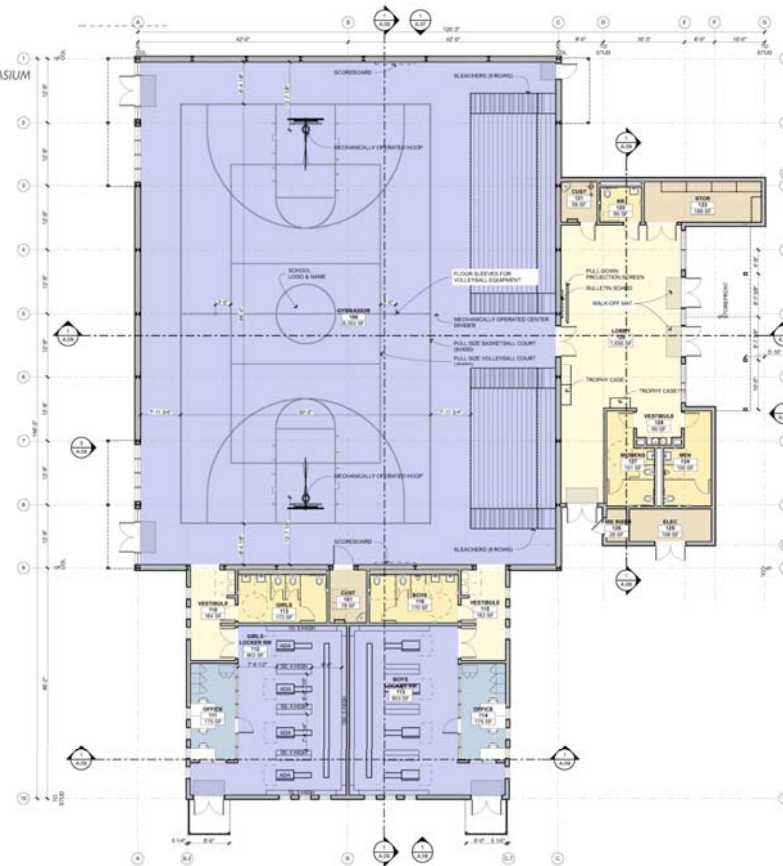
> BAYSIDE STEM ACADEMY GYMNASIUM | JULY 24, 2017 | SCHEMATIC DESIGN | 1629.00



GYM BUILDING SCHEMATIC DESIGN

FLOOR PLAN

BAYSIDE STEM ACADEMY | NEW GYMNASIUM



Legend	
Room Number	Room Name
101	Reception
102	Office
103	Office
104	Office
105	Office
106	Office
107	Office
108	Office
109	Office
110	Office
111	Office
112	Office
113	Office
114	Office
115	Office
116	Office
117	Office
118	Office
119	Office
120	Office
121	Office
122	Office
123	Office
124	Office
125	Office
126	Office
127	Office
128	Office
129	Office
130	Office
131	Office
132	Office
133	Office
134	Office
135	Office
136	Office
137	Office
138	Office
139	Office
140	Office
141	Office
142	Office
143	Office
144	Office
145	Office
146	Office
147	Office
148	Office
149	Office
150	Office
151	Office
152	Office
153	Office
154	Office
155	Office
156	Office
157	Office
158	Office
159	Office
160	Office
161	Office
162	Office
163	Office
164	Office
165	Office
166	Office
167	Office
168	Office
169	Office
170	Office
171	Office
172	Office
173	Office
174	Office
175	Office
176	Office
177	Office
178	Office
179	Office
180	Office
181	Office
182	Office
183	Office
184	Office
185	Office
186	Office
187	Office
188	Office
189	Office
190	Office
191	Office
192	Office
193	Office
194	Office
195	Office
196	Office
197	Office
198	Office
199	Office
200	Office

BUILDING TOTAL AREA: 13,842 SF

> BAYSIDE STEM ACADEMY GYMNASIUM | JULY 24, 2017 | SCHEMATIC DESIGN | 1629.00

FLOOR PLAN
1/8" = 1'-0"

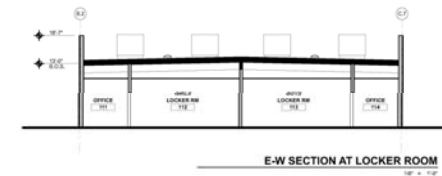
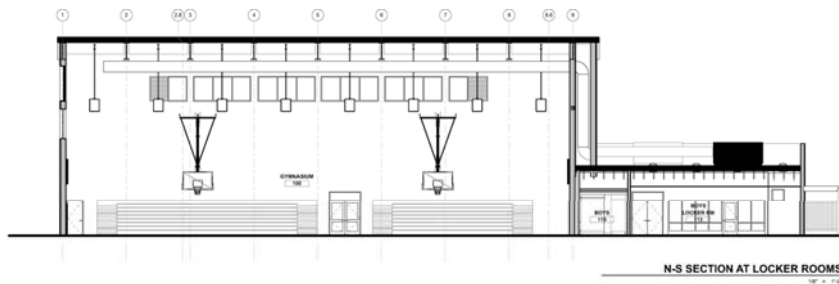
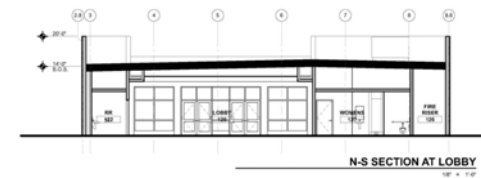
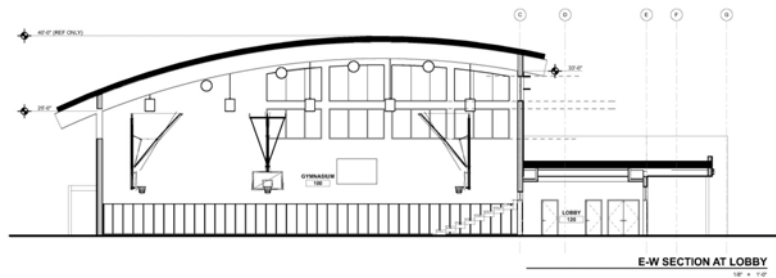
A.02

GYM BUILDING SCHEMATIC DESIGN

Bayside STEM Gym

BUILDING SECTIONS

BAYSIDE STEM ACADEMY | NEW GYMNASIUM



> BAYSIDE STEM ACADEMY GYMNASIUM | JULY 24, 2017 | SCHEMATIC DESIGN | 1629.00

A.09

GYM BUILDING SCHEMATIC DESIGN

Bayside STEM Gym

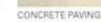


> BAYSIDE STEM ACADEMY GYMNASIUM | JULY 24, 2017 | SCHEMATIC DESIGN | 1629.00

A.10

GYM BUILDING SCHEMATIC DESIGN

BAYSIDE STEM ACADEMY | LANDSCAPE



L.2

GYM BUILDING SCHEMATIC DESIGN

PLANT IMAGERY

BAYSIDE STEM ACADEMY | LANDSCAPE



TREES



ACER MACROPHYLLUM

ACER NEGUNDO V. CALIFORNICA

CHILOPSIS LINEARIS

CORYLUS CORNUTA V. CALIFORNICA

PLATANUS RACEMOSA

SHRUBS



CARPENTERIA CALIFORNICA

CEANOTHUS HEARSTIORUM

RAIN GARDEN AND POLLINATOR PLANTS



CAREX TUMULICOLA

DESCHAMPSIA CESPITOSA

FESTUCA CALIFORNICA

FESTUCA IDAHOENSIS

JUNCUS PATENS

MUHLENBERGIA RIGENS



ACHILLEA MILLEFOLIUM

EPILOBIUM DENSIFLORUM

ESCHSCHOLZIA CALIFORNICA

IRIS DOUGLASIANA

MIMULUS CARDINALIS

MONARDELLA SHELTONII

PENSTEMON SPP.

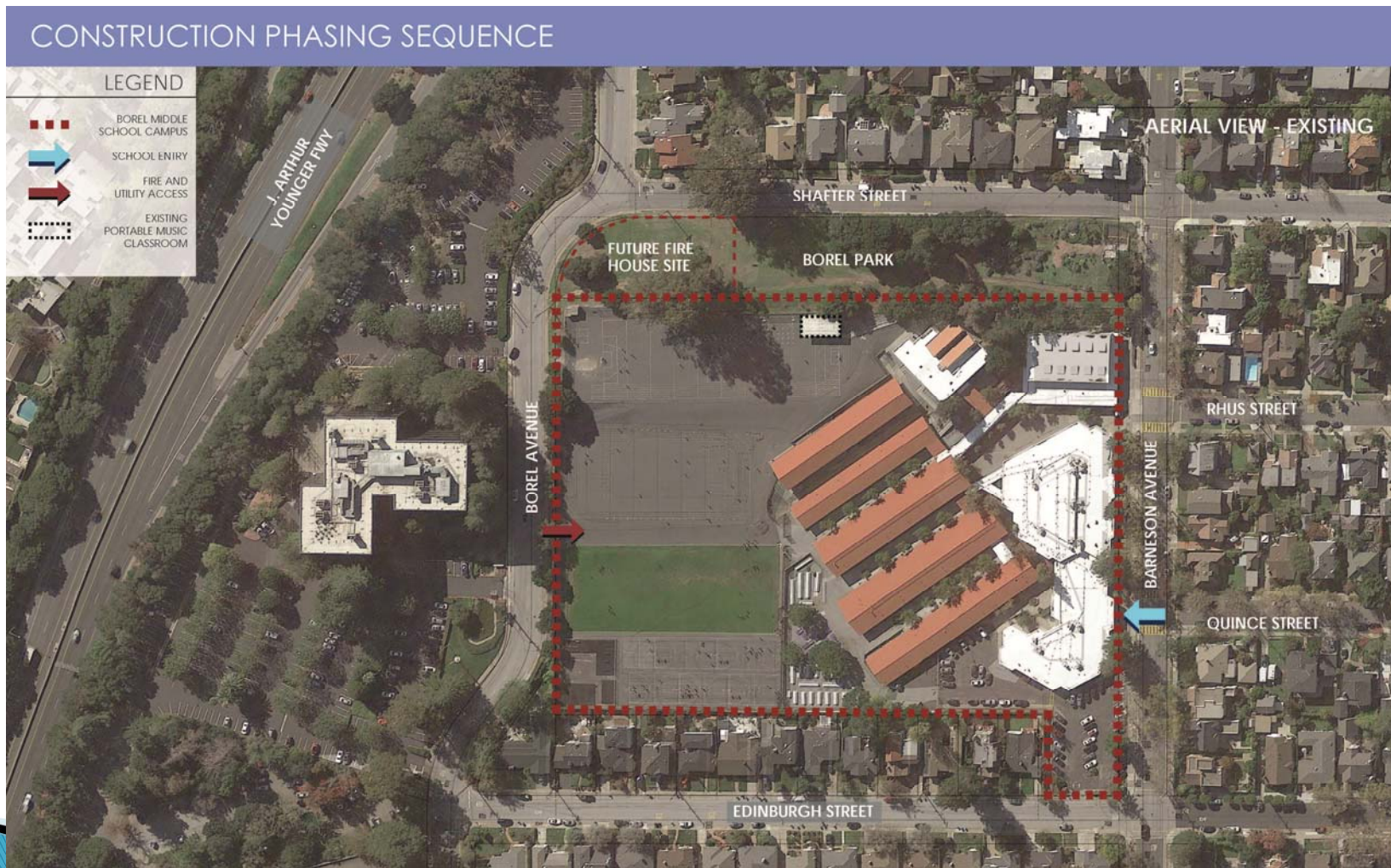
Borel Middle School Gym and Classrooms

- ◆ Borel has seven teachers that are on carts.
- ◆ Because of it's complexity, and the need to get as many classrooms on line, construction will be in multiple Phases.
- ◆ There will be 3 Phases with Phase 2, having multiple increments – Phase 2 – Increment 1, Phase 2 – Increment 2, and Phase 2 – Increment 3.
- ◆ Bulk of the construction work will be done under Phase 2, in all increments.



SAN MATEO-
FOSTER CITY
SCHOOL DISTRICT

Borel Middle School Gym and Classrooms



CSDA DESIGN GROUP

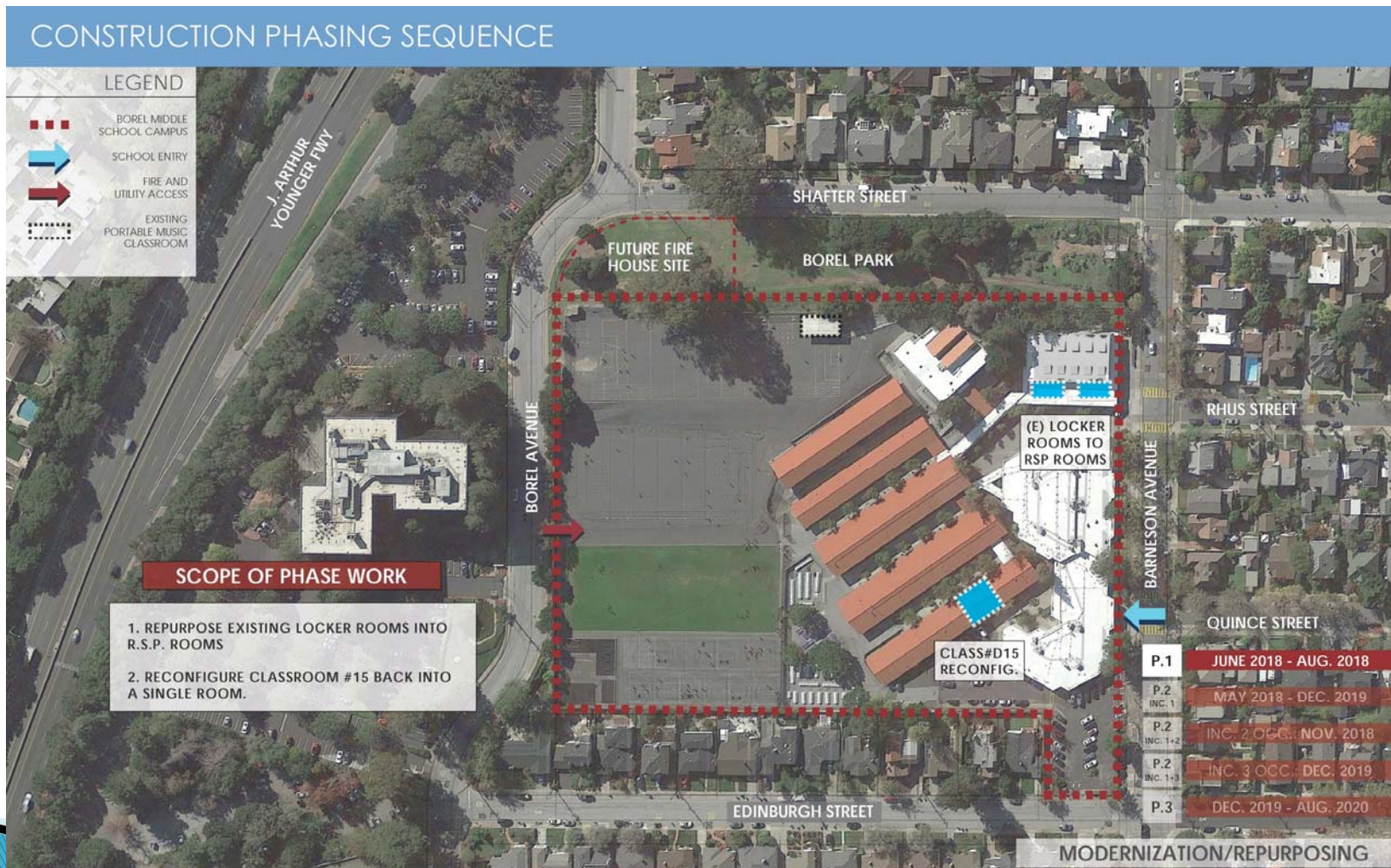


SMFCSD BOREL MIDDLE SCHOOL - NEW GYMNASIUM & CLASSROOMS & MODERNIZATION

JULY 31, 2017

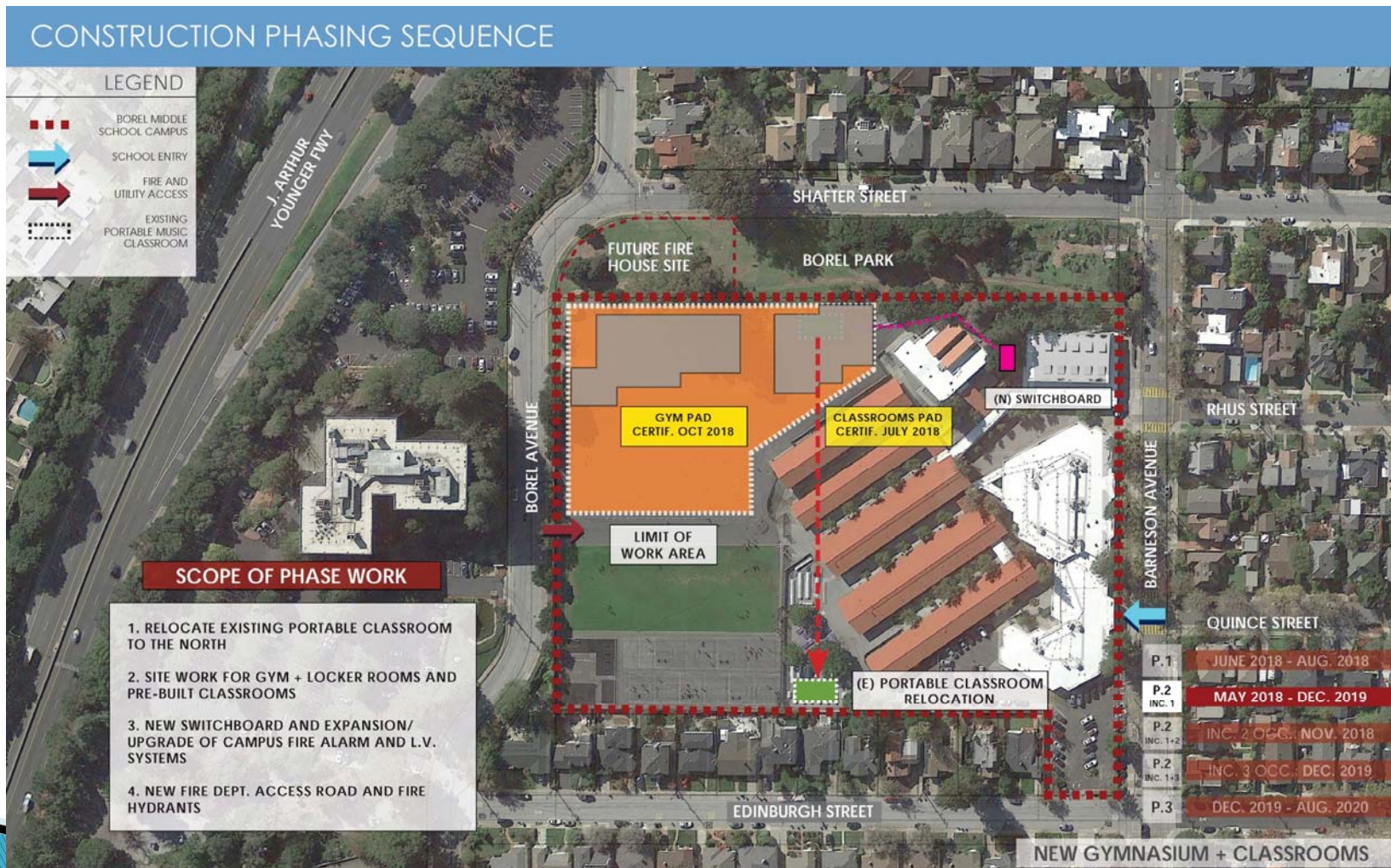


Borel Middle School Gym and Classrooms



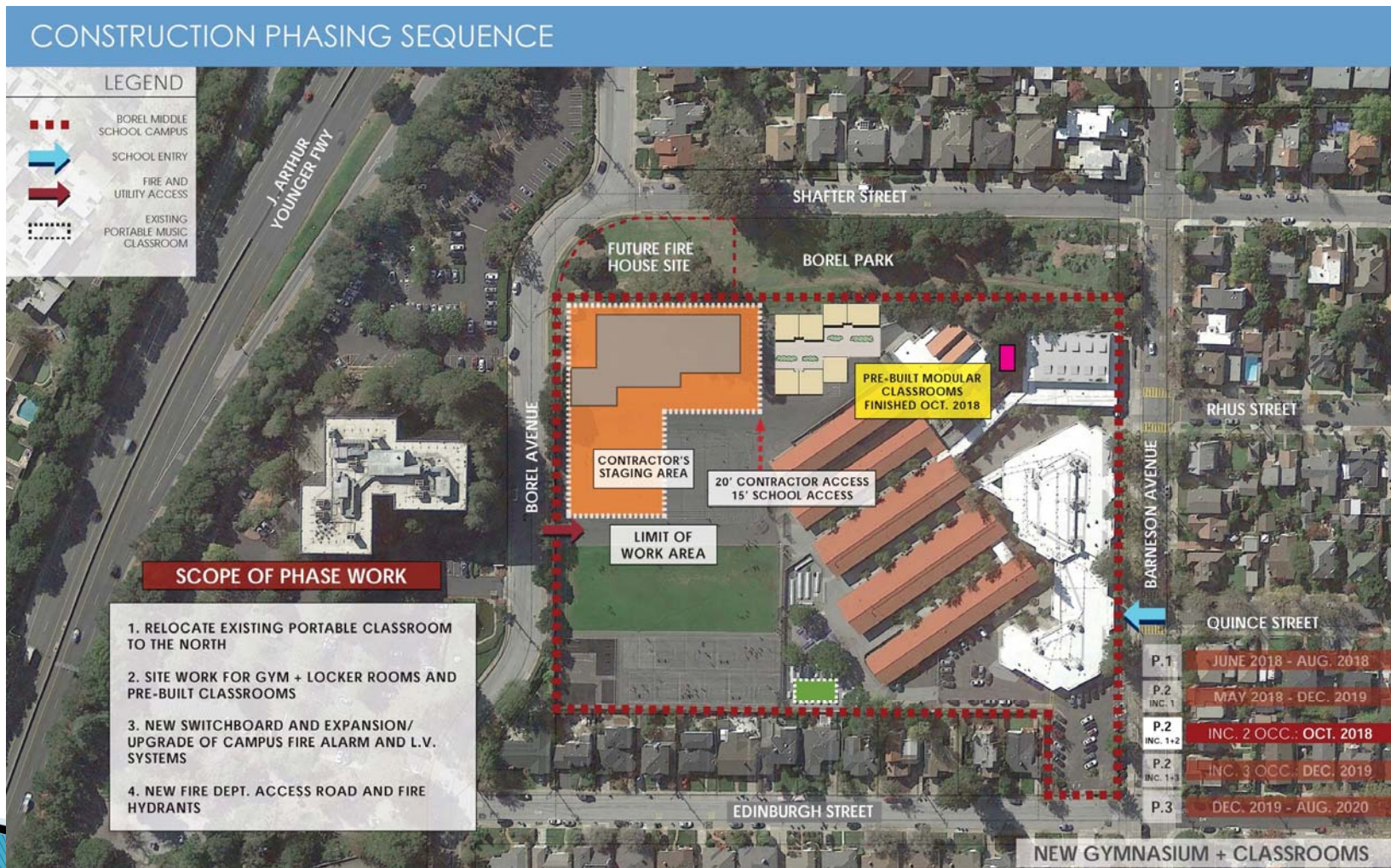


Borel Middle School Gym and Classrooms



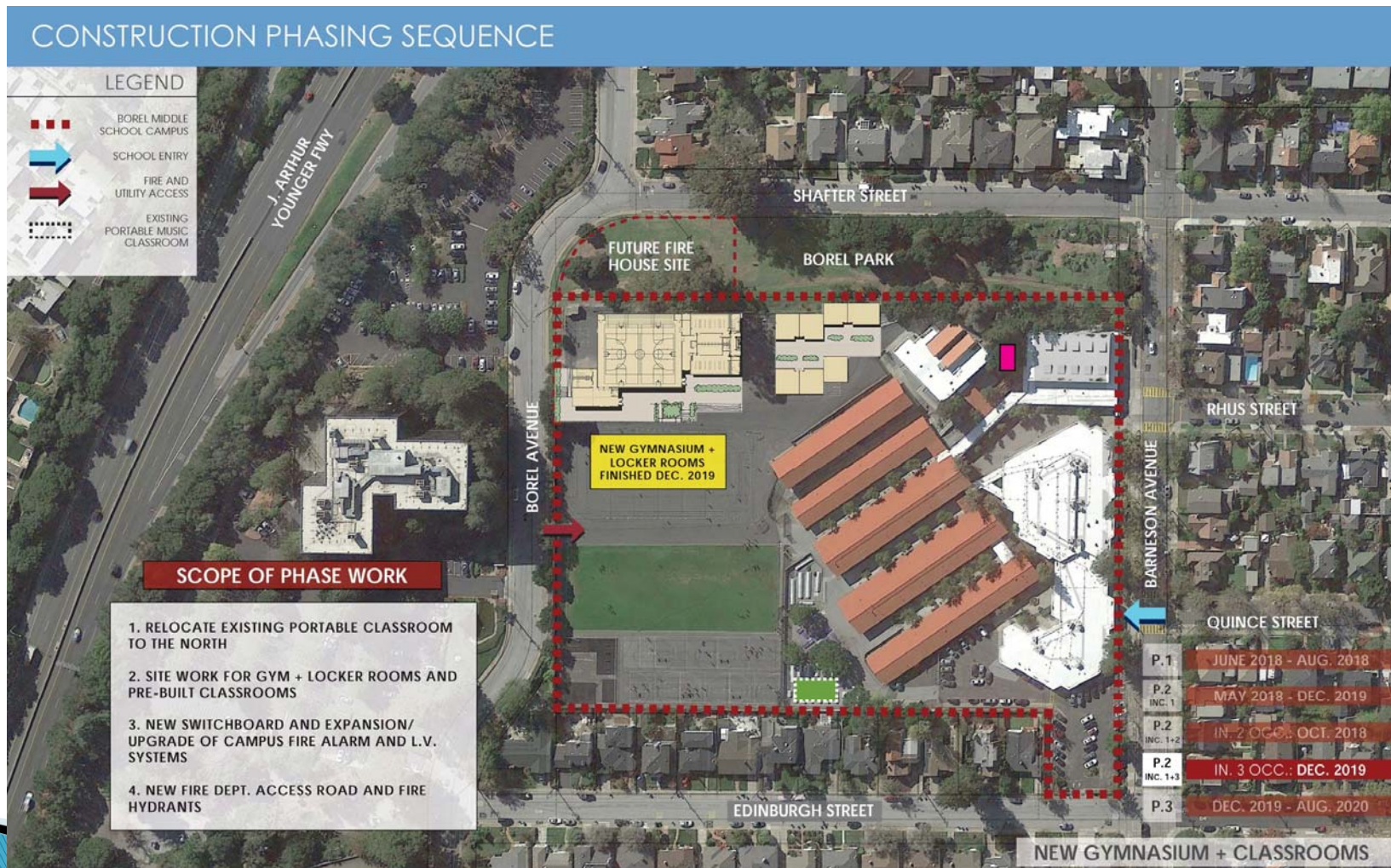


Borel Middle School Gym and Classrooms





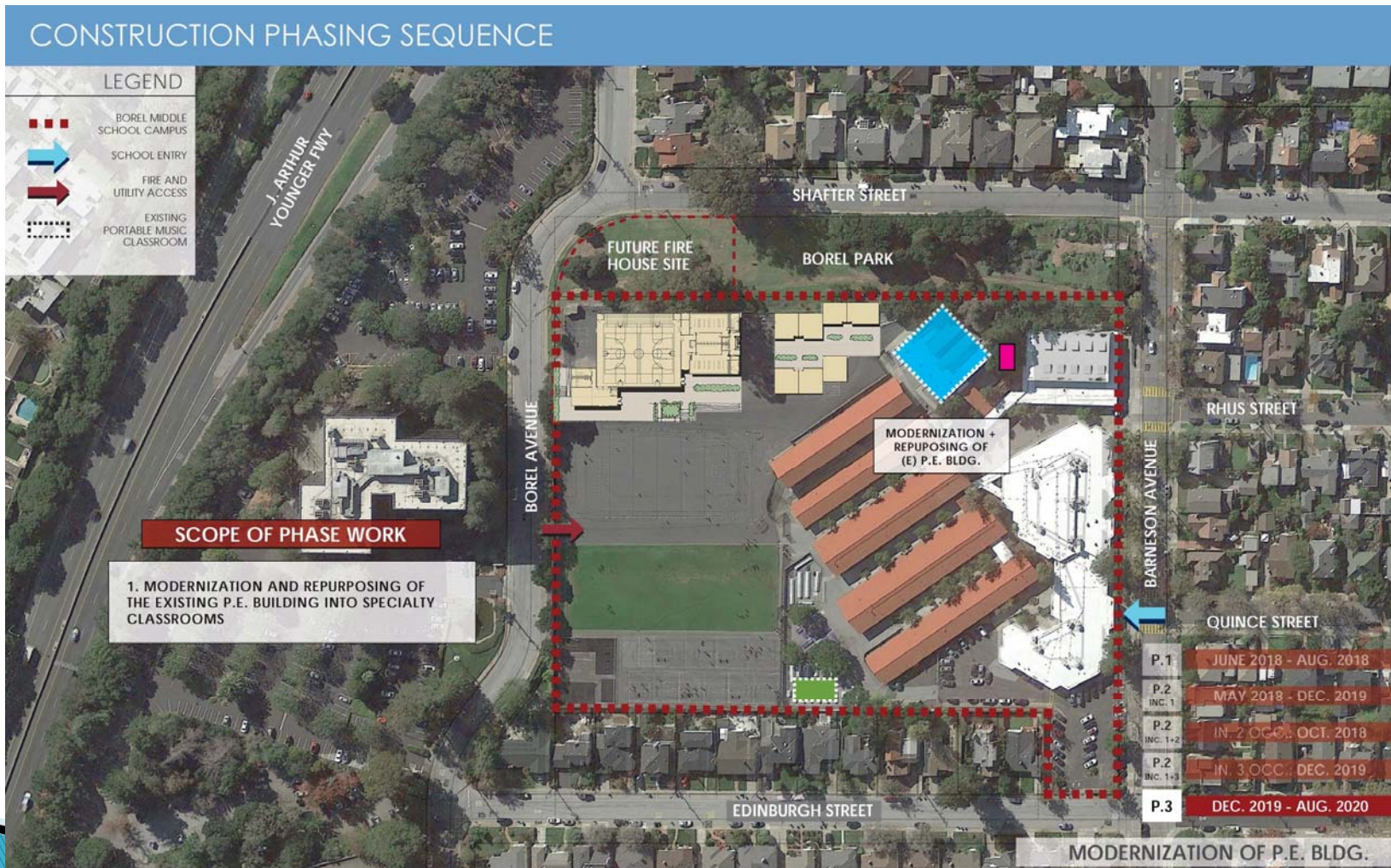
Borel Middle School Gym and Classrooms





SAN MATEO-
FOSTER CITY
SCHOOL DISTRICT

Borel Middle School Gym and Classrooms



CSDA DESIGN GROUP



SMFCS BOREL MIDDLE SCHOOL - NEW GYMNASIUM & CLASSROOMS & MODERNIZATION

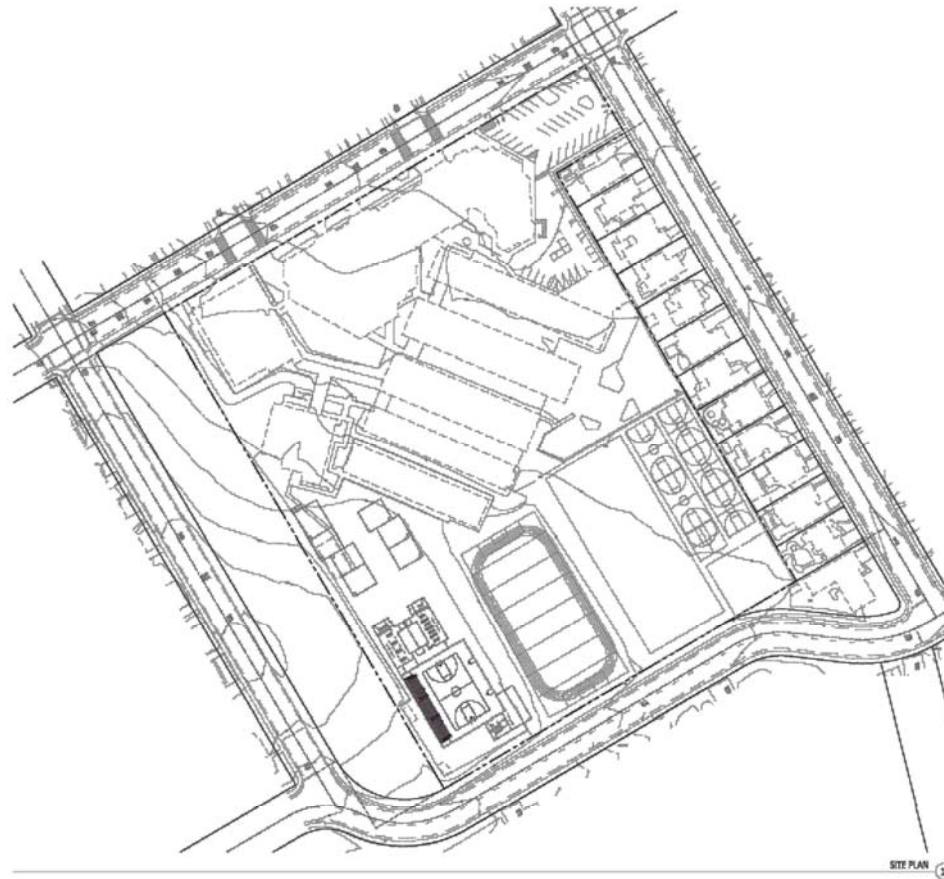
JULY 31, 2017



SAN MATEO-
FOSTER CITY
SCHOOL DISTRICT

Borel Middle School Gym and Classrooms

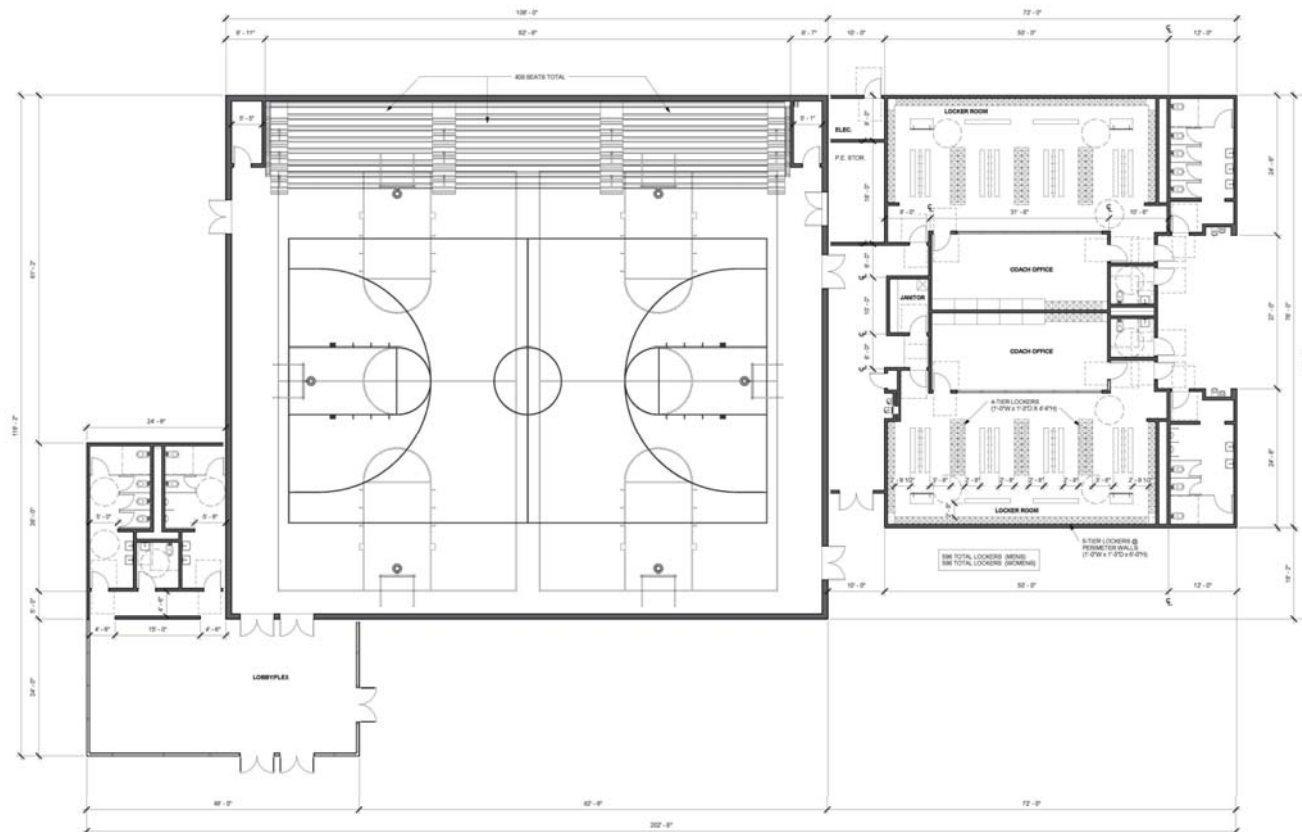
SITE PLAN - PROPOSED DESIGN





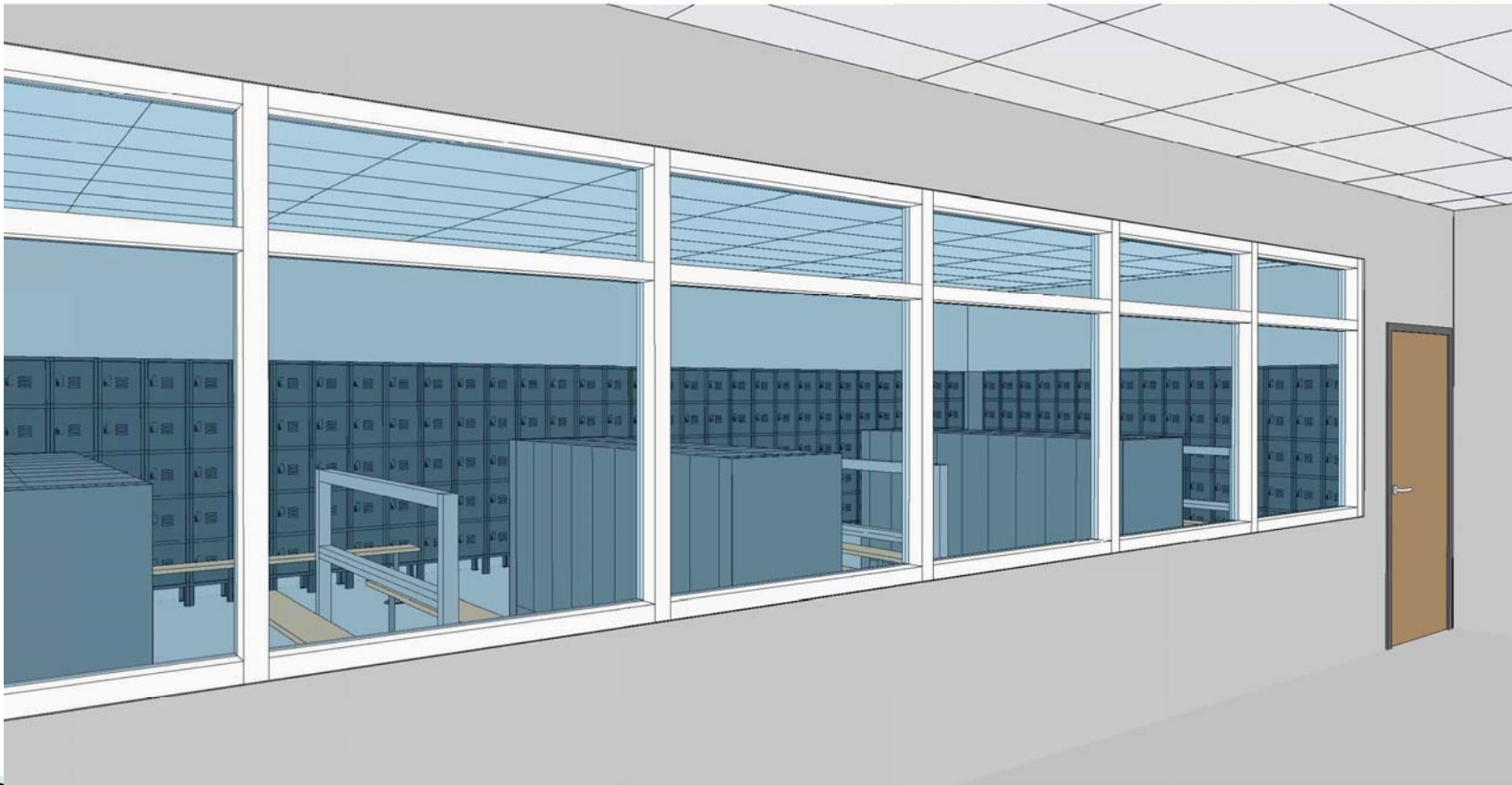
Borel Middle School Gym and Classrooms

FLOOR PLAN - PROPOSED GYMNASIUM



Borel Middle School Gym and Classrooms

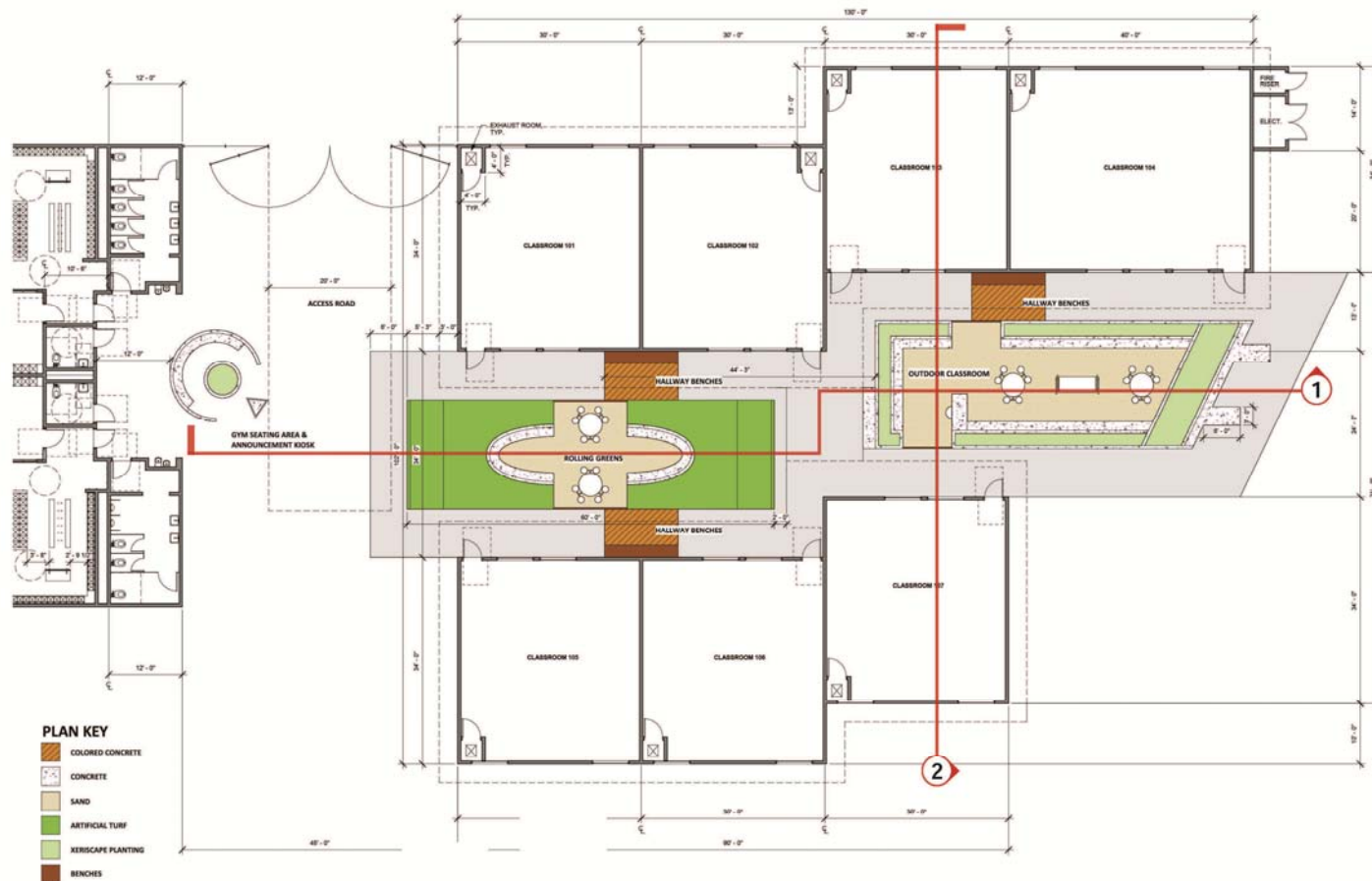
INTERIOR PERSPECTIVE - COACH OFFICE AND LOCKER ROOM





Borel Middle School Gym and Classrooms

SITE PLAN - PROPOSED GYM AND CLASSROOMS



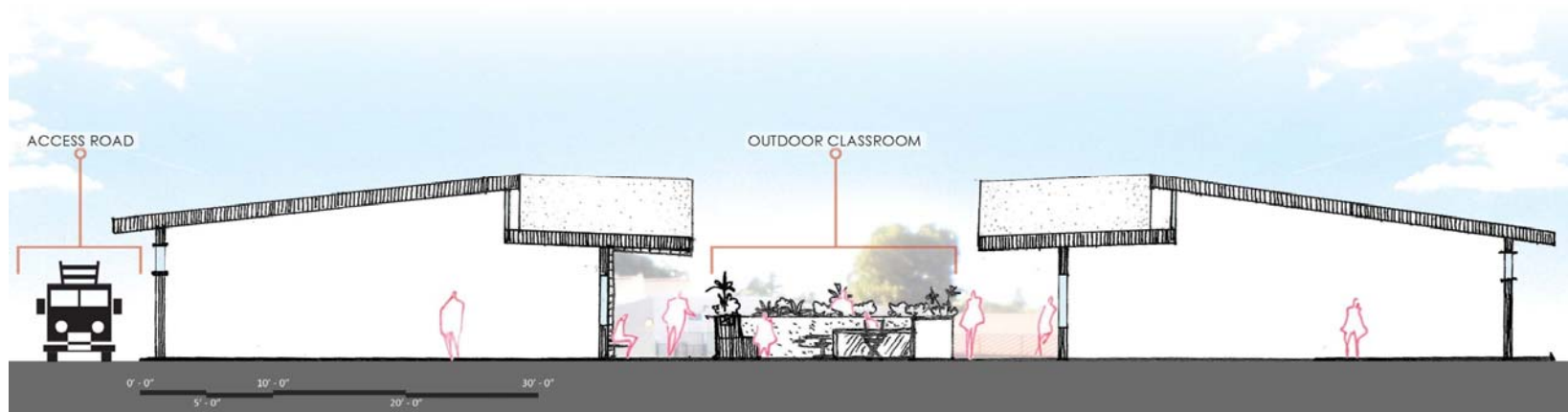
Borel Middle School Gym and Classrooms

SECTION 1 - PROPOSED GYM AND CLASSROOMS



Borel Middle School Gym and Classrooms

SECTION 2 - PROPOSED GYM AND CLASSROOMS





Borel Middle School Gym and Classrooms

MATERIALS BOARD - PROPOSED GYM AND CLASSROOMS

CLASSROOM EXTERIORS

FIELD



STUCCO



FIBER CEMENT
PANELS

ACCENTS

TERRA COTTA



FCP
(COLORED)



FCP
(LINEAR TEXTURE)



CONCRETE



FCP
(WOOD TEXTURE)



STANDING METAL
SEAM ROOF

OUTDOOR AREAS



SEALED CONCRETE



FCP - WOOD TEXTURE



ARTIFICIAL TURF



BOULDERS



STAINED CONCRETE

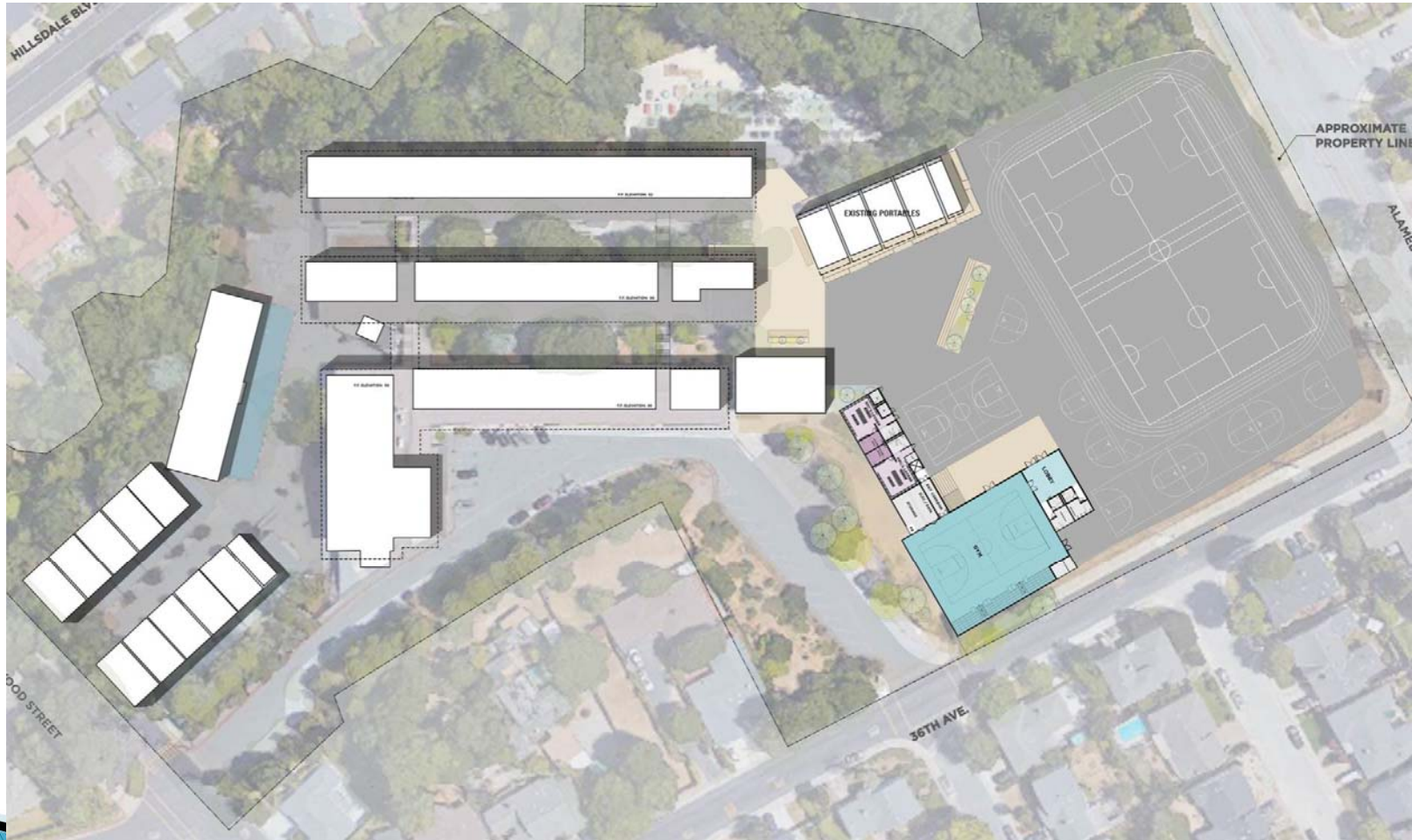


XERISCAPE

Abbott Middle School Gym and Classrooms

- ◆ Same strategy as Borel Middle School – repurpose underutilized spaces to convert into classrooms.
- ◆ Existing RSP Classroom (Room 31), to be moved to Room 15, in front of Gym Building. Room 31 becomes full size classroom.
- ◆ Room 15, currently a Counseling Office, will be converted into a Classroom, and existing radio station space in library becomes a Counseling Room.
- ◆ Boys and Girls Locker Rooms, under Music Building will be turned into classrooms.
- ◆ Net gain of two new classrooms.

Abbott Middle School Gym and Classrooms



Abbott Middle School Gym and Classrooms



NEW RSP ROOM

Abbott Middle School Gym and Classrooms



NEW RSP ROOM

Abbott Middle School Gym and Classrooms



NEW RSP ROOM

Abbott Middle School Gym and Classrooms



NEW RSP ROOM

Abbott Middle School Gym and Classrooms



LOCKER ROOMS TO BE RE-PURPOSED

Abbott Middle School Gym and Classrooms



LOCKER ROOMS TO BE RE-PURPOSED

Abbott Middle School Gym and Classrooms



LOCKER ROOMS TO BE RE-PURPOSED

Abbott Middle School Gym and Classrooms



LOCKER ROOMS TO BE RE-PURPOSED

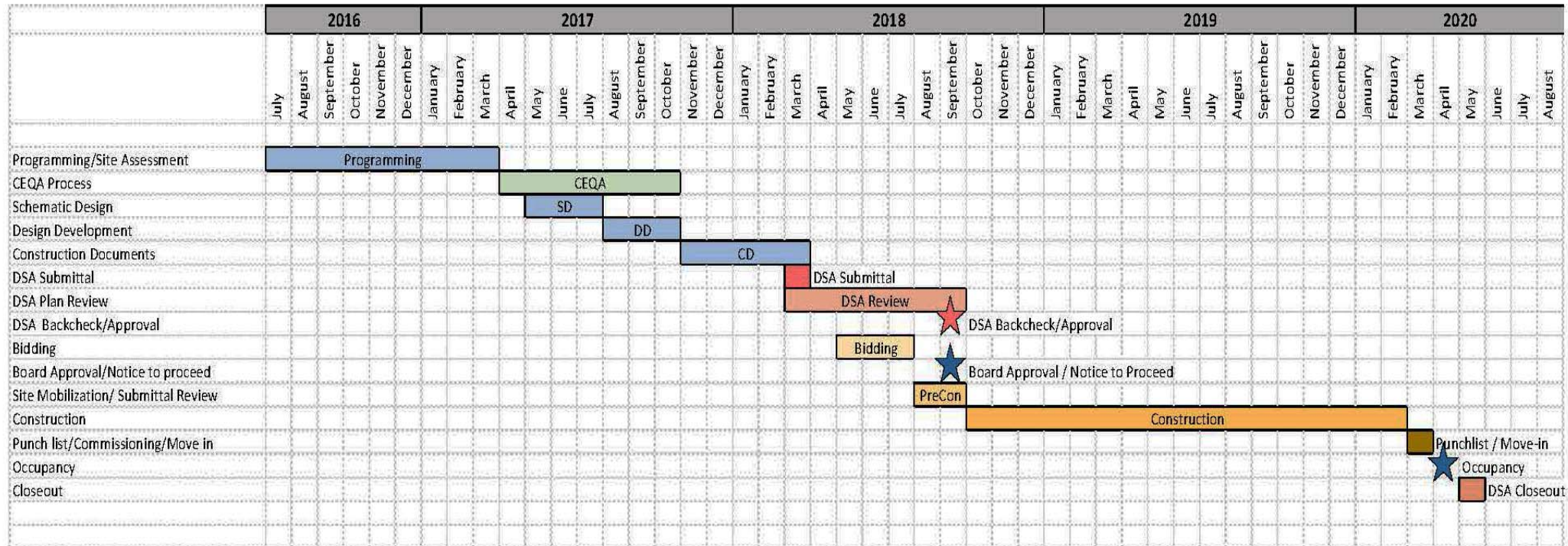
Abbott Middle School Gym and Classrooms



LOCKER ROOMS TO BE RE-PURPOSED

Abbott Middle School Gym and Classrooms

Abbott Middle School Proposed Schedule



New Foster City Elementary School

- ◆ Completed Schematic Design and proceeding to Design Development.
- ◆ Design Development meetings to discuss building systems.
- ◆ Resolved soil/footing issue with minimal effect on building interior and exterior.



SAN MATEO-
FOSTER CITY
SCHOOL DISTRICT

New Foster City Elementary School

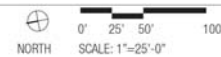


New Foster City Elementary School - Site Plan

San Mateo-Foster City School District

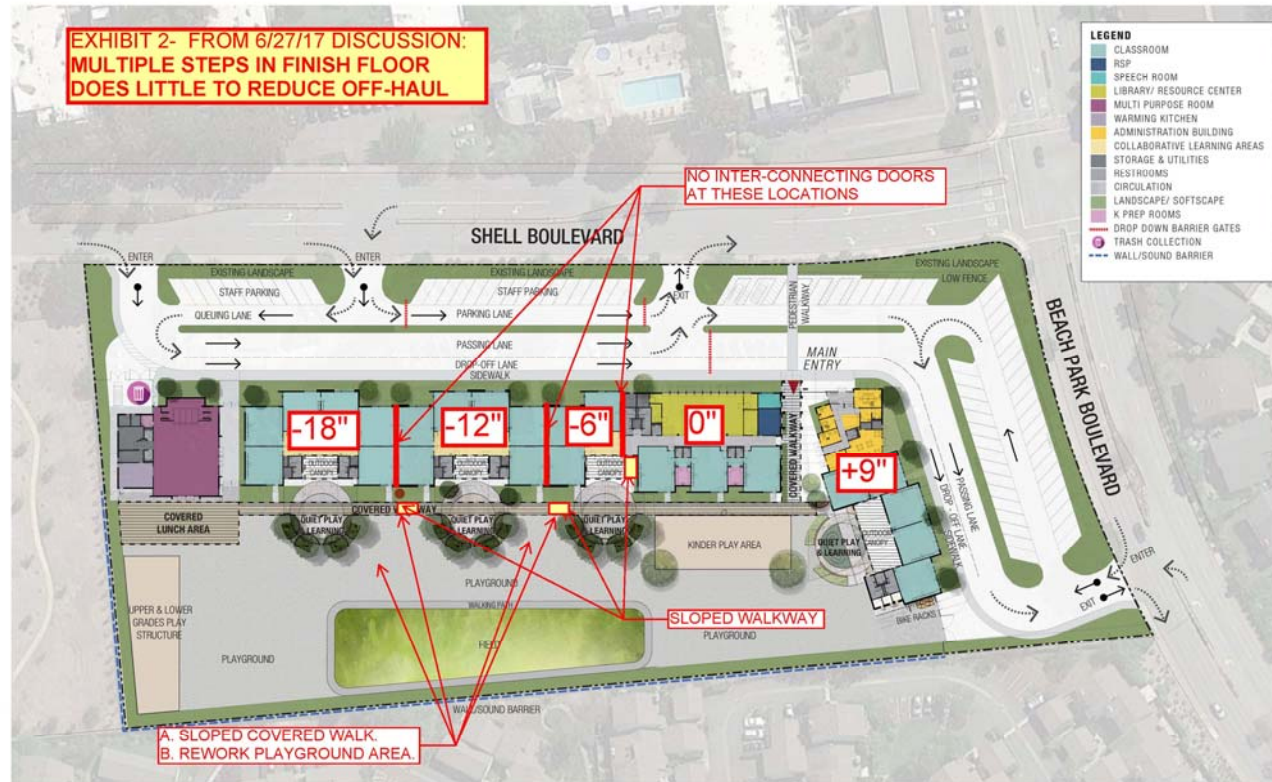
06.20.2017

HMC Architects



SITE PLAN

New Foster City Elementary School



New Foster City Elementary School - Site Plan

San Mateo-Foster City School District

06.20.2017

HMC Architects



SITE PLAN



New Foster City Elementary School



CLASSROOM DESIGN

New Foster City Elementary School



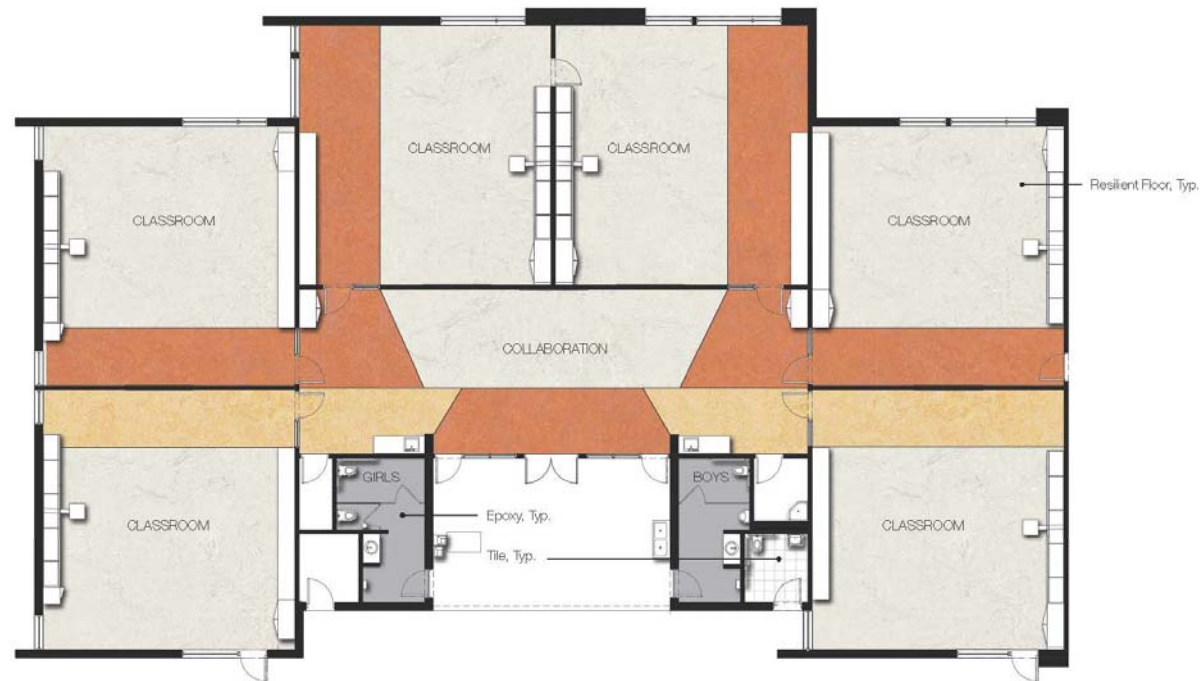
CLASSROOM DESIGN

New Foster City Elementary School



CLASSROOM DESIGN

New Foster City Elementary School



Classroom Cluster Finish Floor Plan

3 New Foster City Elementary School / San Mateo-Foster City School District
 Interior Design Submittal / P9541001 / July 26, 2017 / Westlake Urban + HMC Architects

CLASSROOM DESIGN

Questions & Comments