



SAN MATEO-FOSTER CITY
SCHOOL DISTRICT

Measure X – Citizens' Bond Oversight Committee Meeting
23 May 2017
6:00 PM – 6:45 PM



SAN MATEO-FOSTER CITY SCHOOL DISTRICT

Meeting Agenda

- I. Meeting call to Order
- II. Roll Call of Bond Oversight Committee Members
- III. Public Comment
- IV. Approval of Minutes

Draft minutes from 23 February 2017 meeting will be reviewed and vote for approval.

- V. Review of Today's Agenda
- VI. Review of Financial Expenditures

Kyle Montgomery from Christy White will present its audit of the 2015-2016 Measure X expenditures.

VII. Program Status Update

Brief report on the status of the Phase I Measure X Projects – New Foster City Elementary School, Abbott Middle School Gym/Classrooms, Borel Middle School Gym/Classrooms, and Bayside STEAM/STEM Gym.

VII. Next Meeting and Tentative Future Meetings

Future Meetings:

*To Be Scheduled
Field Trip*

VII. Future Agenda Items

VIII. Adjourn



SAN MATEO-FOSTER CITY SCHOOL DISTRICT

New Foster City Elementary School – Design Strategies

- ◆ Provide facilities needed for recent and future enrollment increases in Foster City.
- ◆ Be sensitive to adjacent neighbors
 - Locate buildings closest to the street and away from residences.
 - Minimize traffic impacts by providing a long zone for queuing for student drop off and pick up. Locate school entrance at the far end of drop off/pick up zone.
 - Provide enough parking spaces to minimize on street parking in adjacent neighborhoods.
 - Fitting into the neighborhood context.
- ◆ Provide a prominent entry into the campus.
- ◆ Provide a landscape zone as a buffer and for visual transition
- ◆ Use current design principles that are environmentally conscious.



SAN MATEO-FOSTER CITY SCHOOL DISTRICT

New Foster City Elementary School – Site Plan



New Foster City Elementary School - Conceptual Site Plan

San Mateo-Foster City School District

04.18.2017



HMC Architects



SAN MATEO-FOSTER CITY
SCHOOL DISTRICT

New Foster City Elementary School – Shell Blvd. Looking South





SAN MATEO-FOSTER CITY
SCHOOL DISTRICT

New Foster City Elementary School – Shell Blvd. Looking South





SAN MATEO-FOSTER CITY
SCHOOL DISTRICT

New Foster City Elementary School – Corner of Beach Park and Shell Blvd.





SAN MATEO-FOSTER CITY
SCHOOL DISTRICT

New Foster City Elementary School – Corner of Beach Park and Shell Blvd.





SAN MATEO-FOSTER CITY
SCHOOL DISTRICT

Abbott Middle School Gym and Classrooms

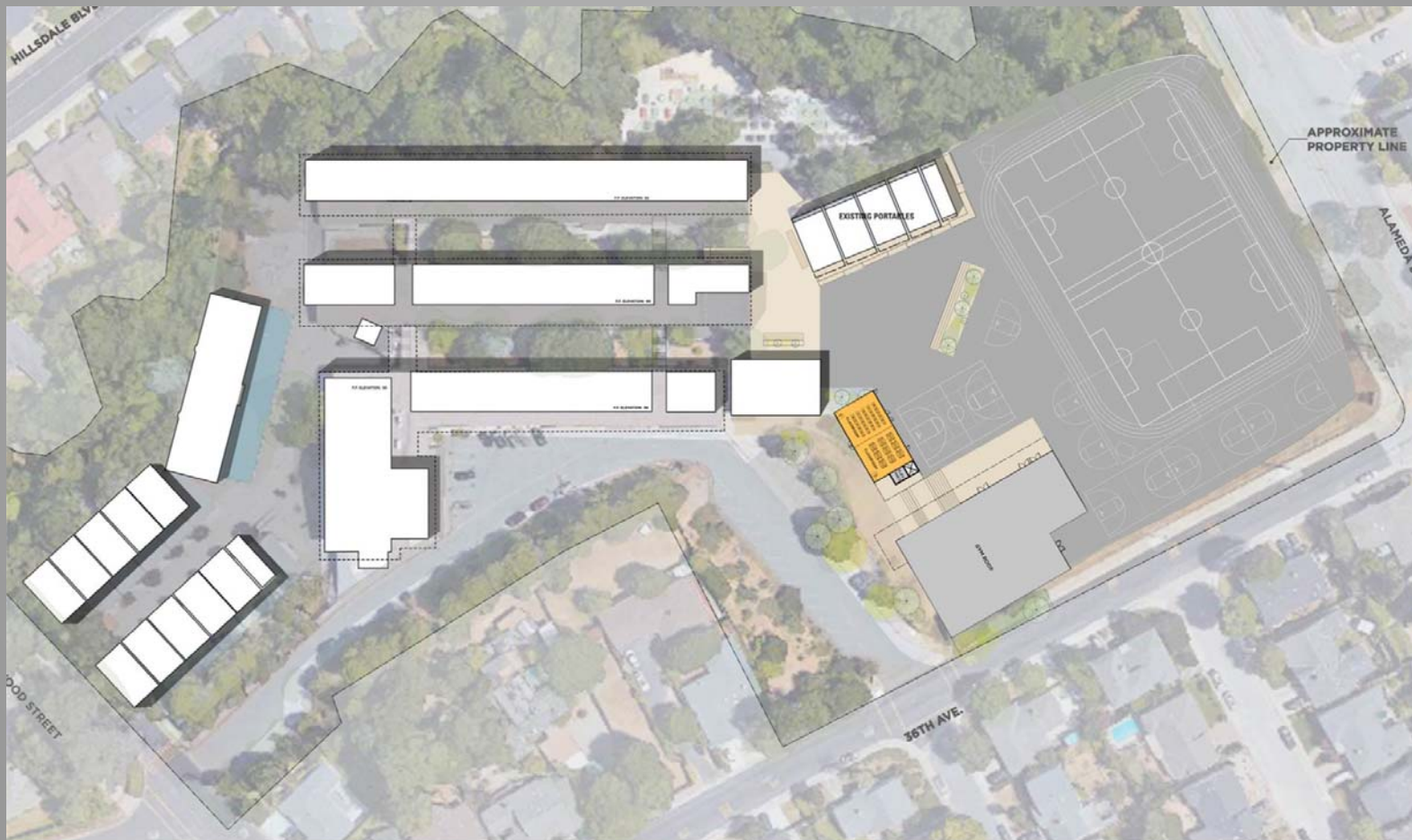
- ◆ Classrooms: 6 Additional Classrooms Created
 - Repurposing underutilized space to create 4 classrooms
 - 2 New Classrooms adjacent to Gym Building

- ◆ Gym Building with high school size main court and lockers.



SAN MATEO-FOSTER CITY SCHOOL DISTRICT

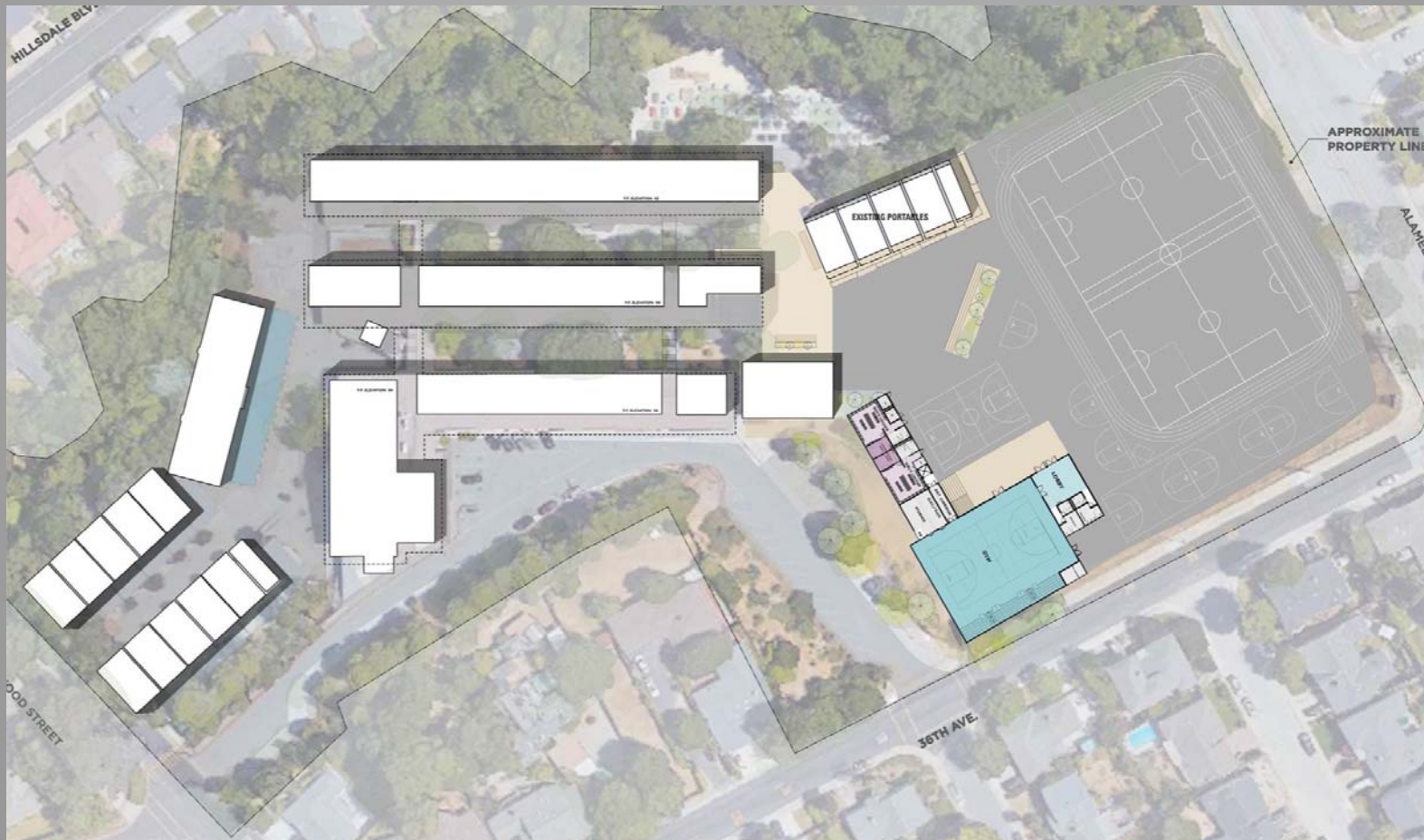
Abbott Middle School Gym and Classrooms





SAN MATEO-FOSTER CITY SCHOOL DISTRICT

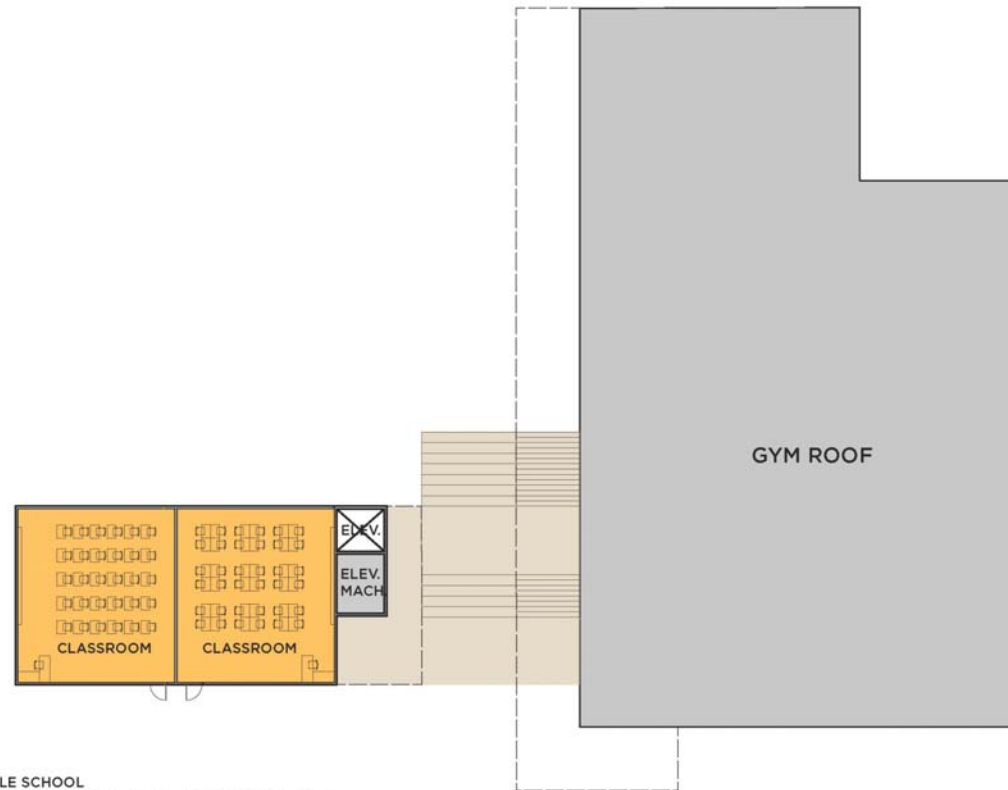
Abbott Middle School Gym and Classrooms





SAN MATEO-FOSTER CITY SCHOOL DISTRICT

Abbott Middle School Gym and Classrooms

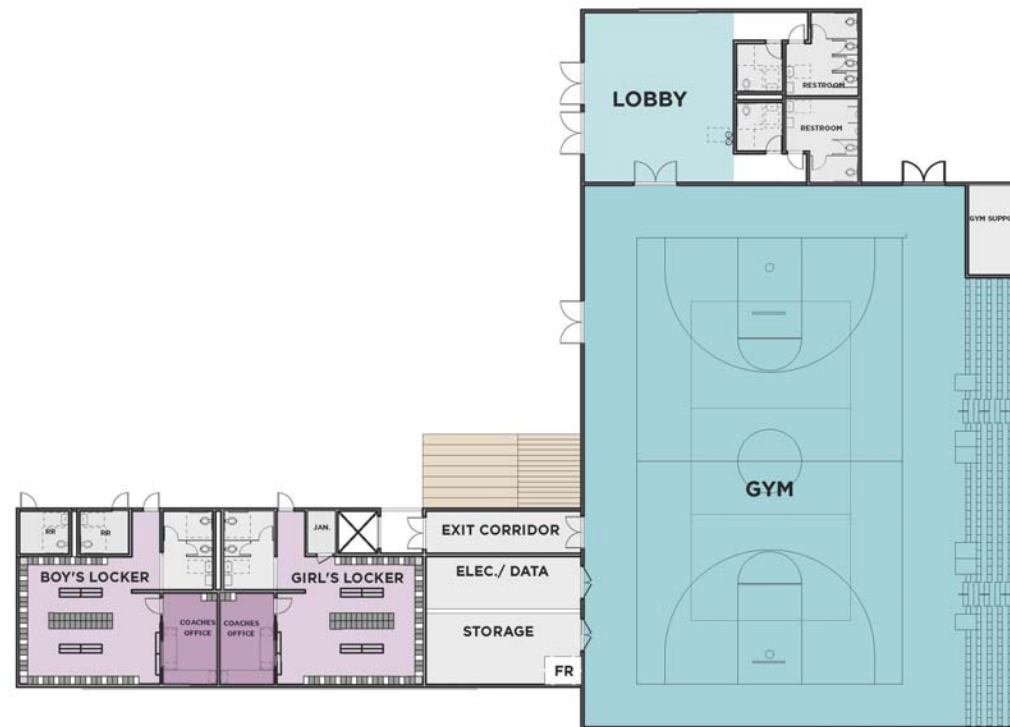


ABBOTT MIDDLE SCHOOL
PROPOSED FLOOR PLAN - UPPER LEVEL
APRIL, 2017



SAN MATEO-FOSTER CITY SCHOOL DISTRICT

Abbott Middle School Gym and Classrooms



ABBOTT MIDDLE SCHOOL
PROPOSED FLOOR PLAN - LOWER LEVEL
APRIL, 2017



SAN MATEO-FOSTER CITY
SCHOOL DISTRICT

Abbott Middle School Gym and Classrooms





SAN MATEO-FOSTER CITY
SCHOOL DISTRICT

Abbott Middle School Gym and Classrooms





	2016				2017				2018				2019				2020															
	July	August	September	October	November	December	January	February	March	April	May	June	July	August	September	October	November	December	January	February	March	April	May	June	July	August	September	October	November	December		
Programming/Site Assessment																																
CLQA Process																																
Schematic Design																																
Design Development																																
Construction Documents																																
DSA Submittal																																
DSA Plan Review																																
DSA Backcheck/Approval																																
Bidding																																
Board Approval/Notice to proceed																																
Site Mobilization/ Submittal Review																																
Construction																																
Punch List/Commissioning/Move in																																
Occupancy																																
Closeout																																



SAN MATEO-FOSTER CITY SCHOOL DISTRICT

Borel Middle School Gym and Classrooms

- ◆ Classrooms: 8 Additional Classrooms Needed and 1 Replacement Classroom (affected by Construction)
 - Portable Building used by Music Program in the way of construction
 - Music Program will move into current Weight Room, and Weight Room will move into the old Locker Rooms.
 - Spaces in Multi-Use Room will be converted into RSP Rooms. Currently RSP occupies one full classroom.
 - New Classrooms – Total 7

- ◆ Gym Building with high school size main court and lockers.

- ◆ Schedule:
 - Design/Engineering November 2016 – December 2017
 - DSA December 2017 – June 2018
 - Construction July 2018 – June 2019



SAN MATEO-FOSTER CITY SCHOOL DISTRICT

Borel Middle School Gym and Classrooms



[illegible]



SAN MATEO-FOSTER CITY
SCHOOL DISTRICT

Bayside STEM/STEAM Gym

- ◆ Design not as far along as Borel Middle School and Abbott Middle School
- ◆ One logical location for the Gym – location requires modifying existing lease with City of San Mateo/Parks and Recreation.



SAN MATEO-FOSTER CITY SCHOOL DISTRICT

Bayside STEM/STEAM Gym



> BAYSIDE STEM ACADEMY GYMNASIUM | APRIL 13, 2017 | SITE PLANNING | 1629.01



SAN MATEO-FOSTER CITY SCHOOL DISTRICT

Bayside STEM/STEAM Gym





SAN MATEO-FOSTER CITY
SCHOOL DISTRICT

Common Amenities and Qualities of the three Gyms

- ◆ Main Gym Space - Sports flooring with high school size main basketball court with cross courts and various game lines. Ability to divide the main court in two for multiple activities. Ability to bring in as much natural lighting as possible. Mechanically operated retractable bleachers that can accommodate 1/3 of each schools student body.
- ◆ Boys and Girls locker rooms with adjacent boys and girls toilet rooms. PE coach offices within locker rooms with ability to supervise locker rooms. Lobby that can be used as flexible teaching space. Toilet rooms off the lobby.
- ◆ Associated storage spaces for PE and afterschool programs.



SAN MATEO-FOSTER CITY
SCHOOL DISTRICT

Methodology for Achieving Equity Among all Gym Projects

- ◆ All three schools have different and unique site conditions.
- ◆ If separate Budgets are considered for all three Gyms, considering their site's unique features, the result will be different budgets for all schools.
- ◆ To achieve Gym equity:
 - All three budgets were combined into one overall budget.
 - Subtract the costs of classrooms and associated site and soft costs among the two school sites, to determine the costs for the three gyms both in soft and construction costs.
 - Divide the remaining dollars into the three gym projects.



SAN MATEO-FOSTER CITY
SCHOOL DISTRICT

	Combined Middle Schools
Construction Costs: Classrooms (new and mod.)	7,074,318
Site Work & ADA	8,012,022
Soft costs (30% of construction costs)	4,525,902
Change Order Contingency (10%)	1,508,634
FF&E (5%)	754,317
Sub Total: Classrooms, Site Work & ADA	\$ 21,875,193



SAN MATEO-FOSTER CITY
SCHOOL DISTRICT

Measure X Budget: Gym & Classrooms Projects	\$ 48,400,000
Less Classrooms, Site Work & ADA Project Costs	21,875,193
Total Measure X Budget Available for Gyms	\$ 26,524,807



SAN MATEO-FOSTER CITY
SCHOOL DISTRICT

Construction Costs: Gyms	25,686,935
Soft costs (30% of construction cost)	7,706,081
Change Order Contingency (10%)	2,568,694
FF&E (5%)	1,284,347
Sub Total: Gyms	\$ 37,246,056



SAN MATEO-FOSTER CITY
SCHOOL DISTRICT

Remaining Measure X Funds for Gyms	\$ 26,524,807
Cost Estimates for Gyms	37,246,056
Difference	\$ (10,721,249)



SAN MATEO-FOSTER CITY
SCHOOL DISTRICT

Description	Amount	Sources
Middle School Gyms Difference	\$ 10,700,000	
Knolls Rental Maint./Upgrade Reserve	1,800,000	Restricted Ending Fund Balance
Tech Refresh Savings	2,200,000	Restricted Ending Fund Balance
Fund 25 Developer Fees	2,000,000	Restricted Ending Fund Balance
Facility Use Fees	2,000,000	Restricted Ending Fund Balance
Other Funding Sources: State Facilities Bond	2,700,000	New Construction/Modernization
Total Other One Time Funding Sources	\$ 10,700,000	



SAN MATEO-FOSTER CITY
SCHOOL DISTRICT

Comments/Questions